

# LATTES & LLAMAS PRESENTS

# *Natural 20 Sweater*

THE 2024 GEEK-A-LONG



*The Geek-A-Long (GAL) supports Child's Play Charity, which provides games and consoles to children in hospitals and domestic violence shelters. We encourage GAL participants to donate to CP Charity via our [sanctioned widget](#) in lieu of paying for this pattern. No donation is too small!*





# History of the Geek-A-Long

First imagined in the Winter of 2013, the Geek-A-Long (GAL) was born from unrestrained idealism and way too much coffee. The idea was ridiculous: Release a new pattern every week all year, based on pop-culture nerdiness. At the end of the year, we would join 48 double-sided squares together to make a massive blanket. Our Fandom Opus would be sent to the Child's Play Charity Dinner Auction in Seattle, and the proceeds of the sale would go towards providing video games and other entertainment to children in hospitals and domestic violence shelters.

When Megan-Anne cast on that first square, she had no idea what the GAL would turn into. Seven years, seven blankets, and nearly 300 squares later, the Geek-A-Long has grown far beyond us. The community has grown each year and based on our square download statistics there are GAL knitters in every corner of the world. Your generosity is astounding. The GAL community has raised over \$10,000 for Child's play with individual donations and proceeds raised from the sale of the auctioned blankets.

We wanted to do something to make 2020 memorable. Admittedly, that decision was made in 2019, and 2020 doesn't need help standing out. Still, we wanted to shake things up. When Megan-Anne finished knitting that first blanket in 2014, we never imagined we'd still be making them in 2020. We are blown away by how much love and support the project has gotten and couldn't have predicted it. We want you to see [Eight Bit](#), [On Board](#), and now this sweater for what they are: a love letter from us to the entire GAL community.



© *Lattes & Llamas*

All rights reserved. You may not sell, redistribute, or publish this pattern. This pattern is for personal use only. However, if you wish to sell your socks or an item made using this pattern for the benefit of Child's Play Charity, please follow the guidelines set forth by CP Charity to ensure that 100% of the proceeds go to CP Charity. If you use this color chart in one of your designs and wish to share it with others, it must be free and Lattes & Llamas must be given appropriate credit along with a link to our website and the [Child's Play Charity Widget](#).



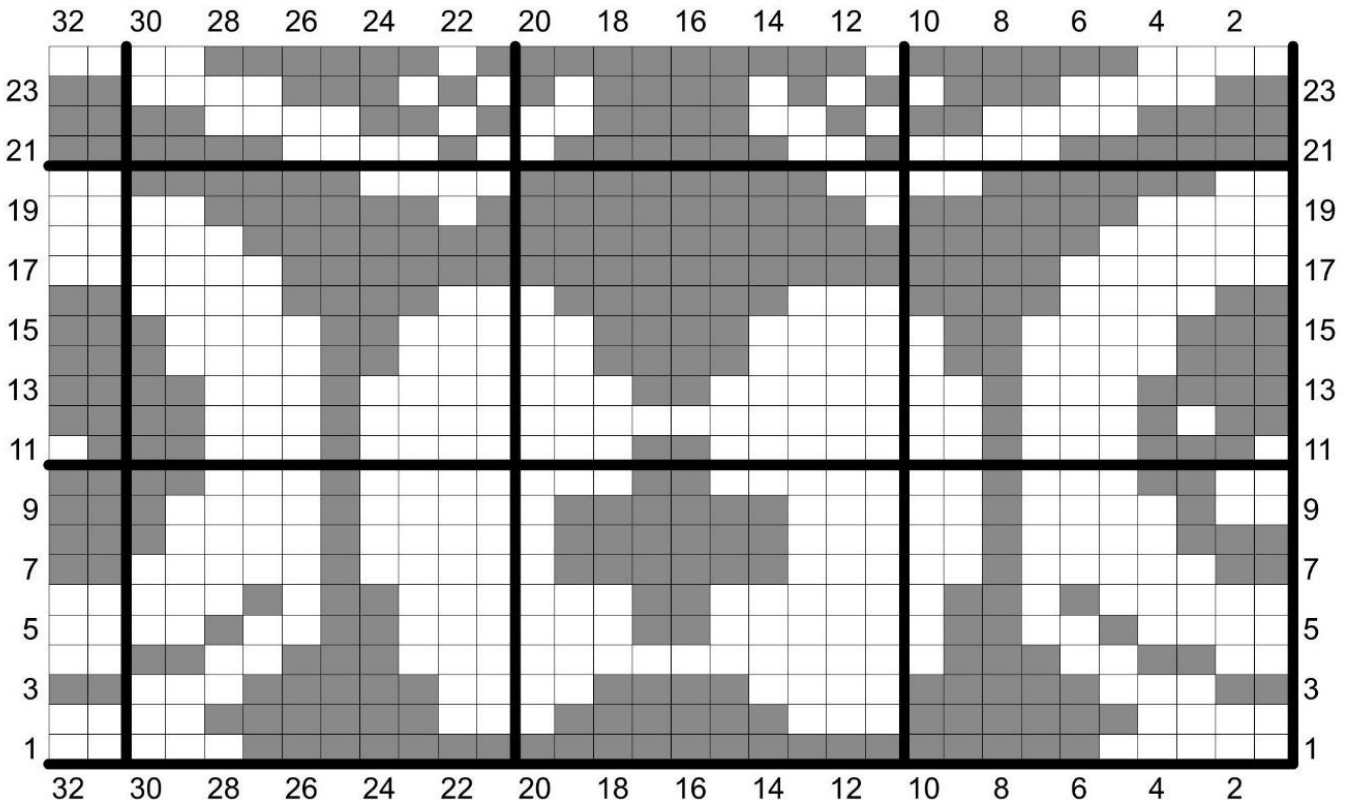
# Natural 20 Sweater: Clue 2

## YOKE (Part 2)

Before working this section, you're going to need to make some character sheet decisions! What class do you want to playknit? Do you want to multi-class? On the following pages you will find charts for 12 classes plus a bonus child's play logo because I think charitable giving should be a playable character class. You can use as few or as many as you want, up to the number of chart repeats in your yoke. Decide which class charts you want to use and if you are using multiple charts, what order you want to make them in. The final page of this clue has all 13 charts on one page. **These are the same charts as the ones on the prior pages**, but shrunk down so that if you can work multiple charts without needing to flip to different pages every 32 sts.

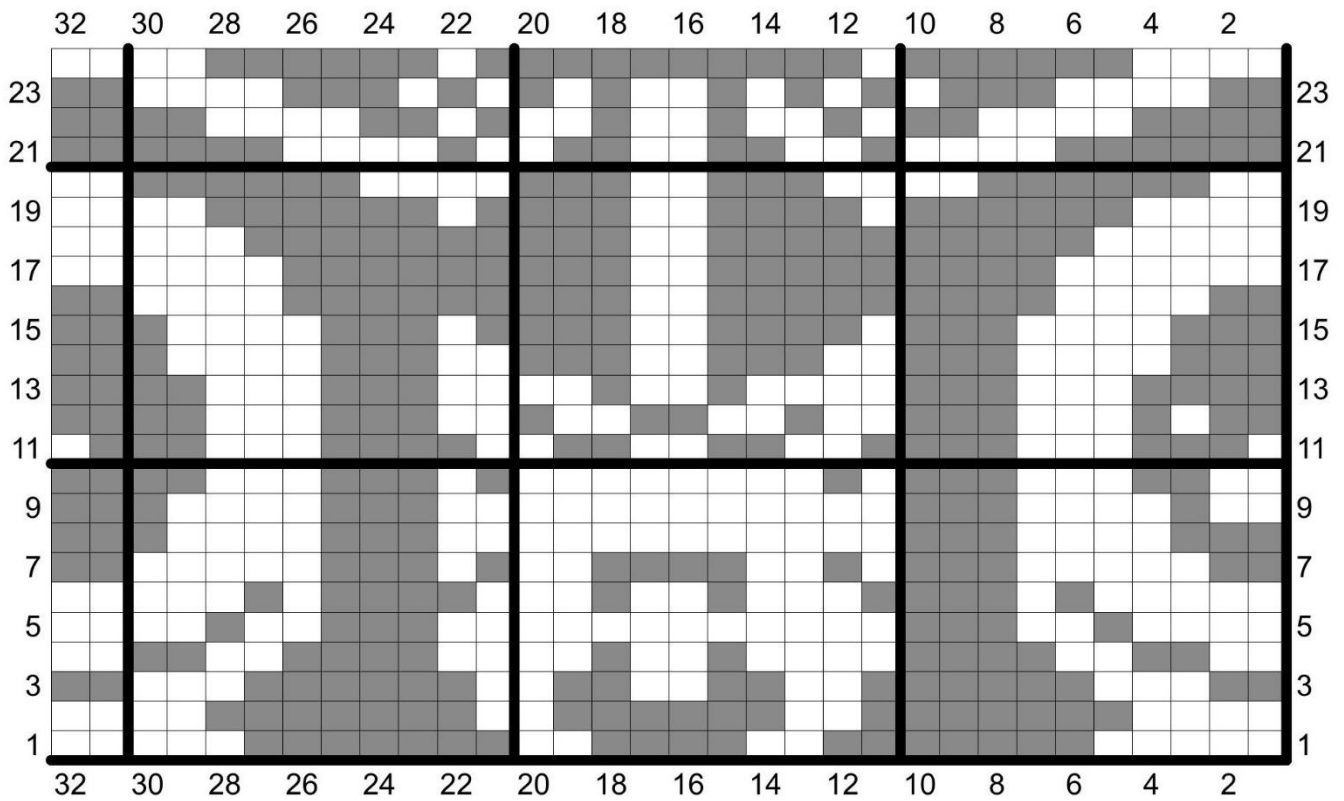
**Charted Rounds:** The first 7 sts of each round are the steek stitches. These are worked by alternating MC and CC each st between the 2 markers as established in Clue 1. Then, work your chosen class charts 10(11, 12, 13) 14(15, 16, 17) 18(19, 20, 21) times around. Take care to catch your yarn behind your work every 5 sts or so during long floats.

### CP Logo

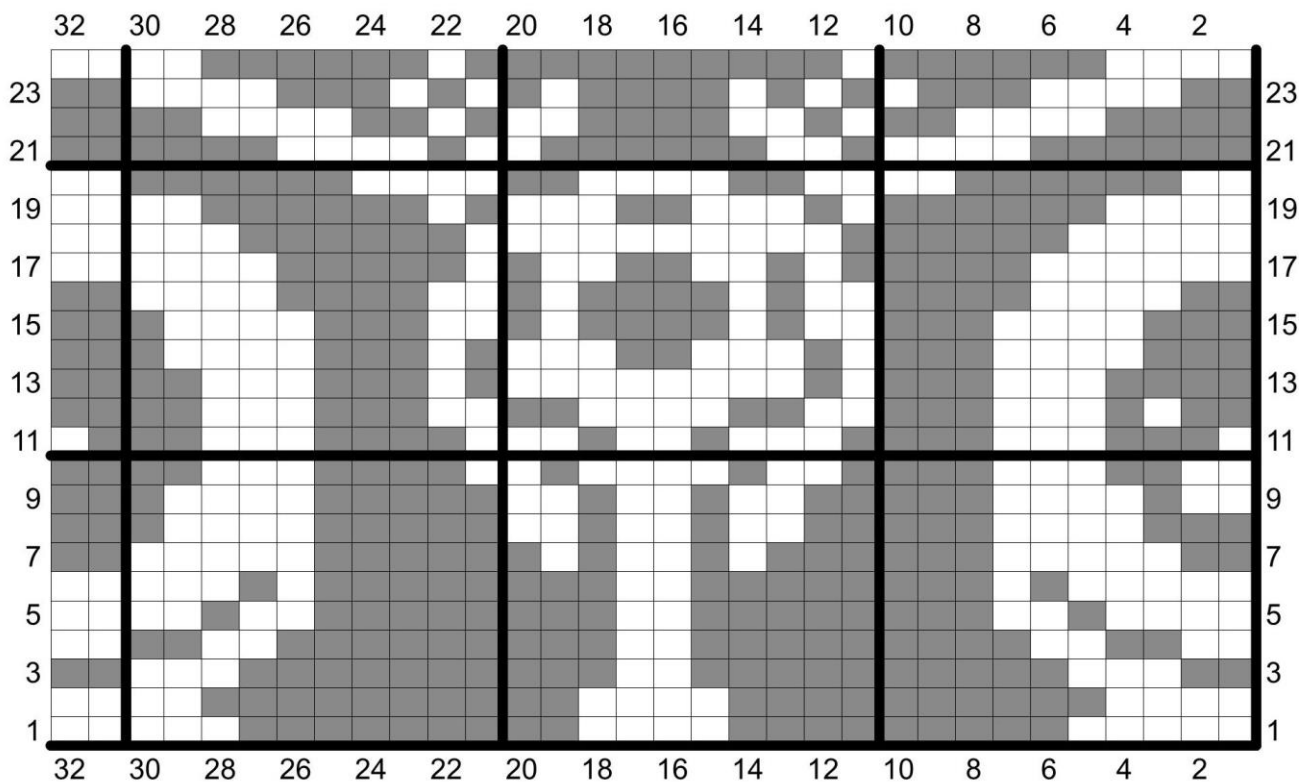




# Barbarian

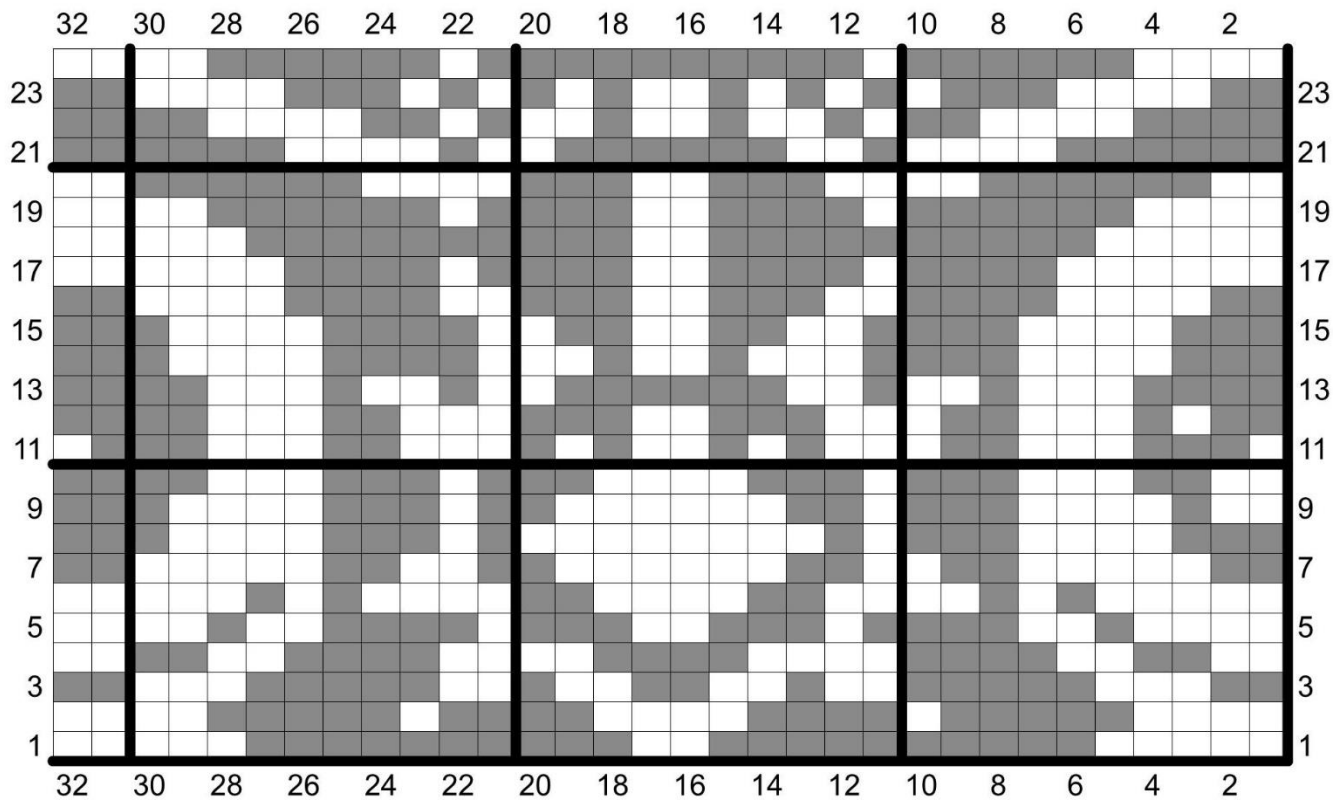


# Bard

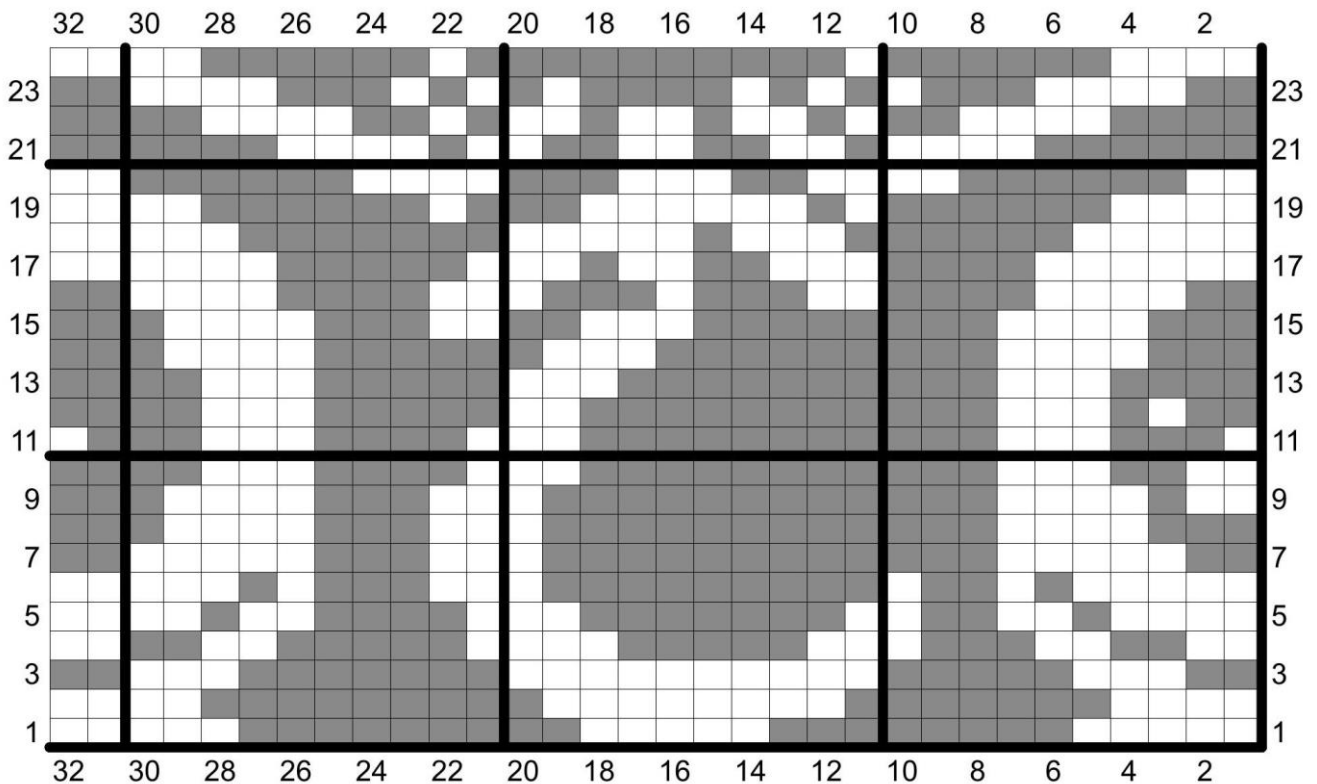




# Cleric

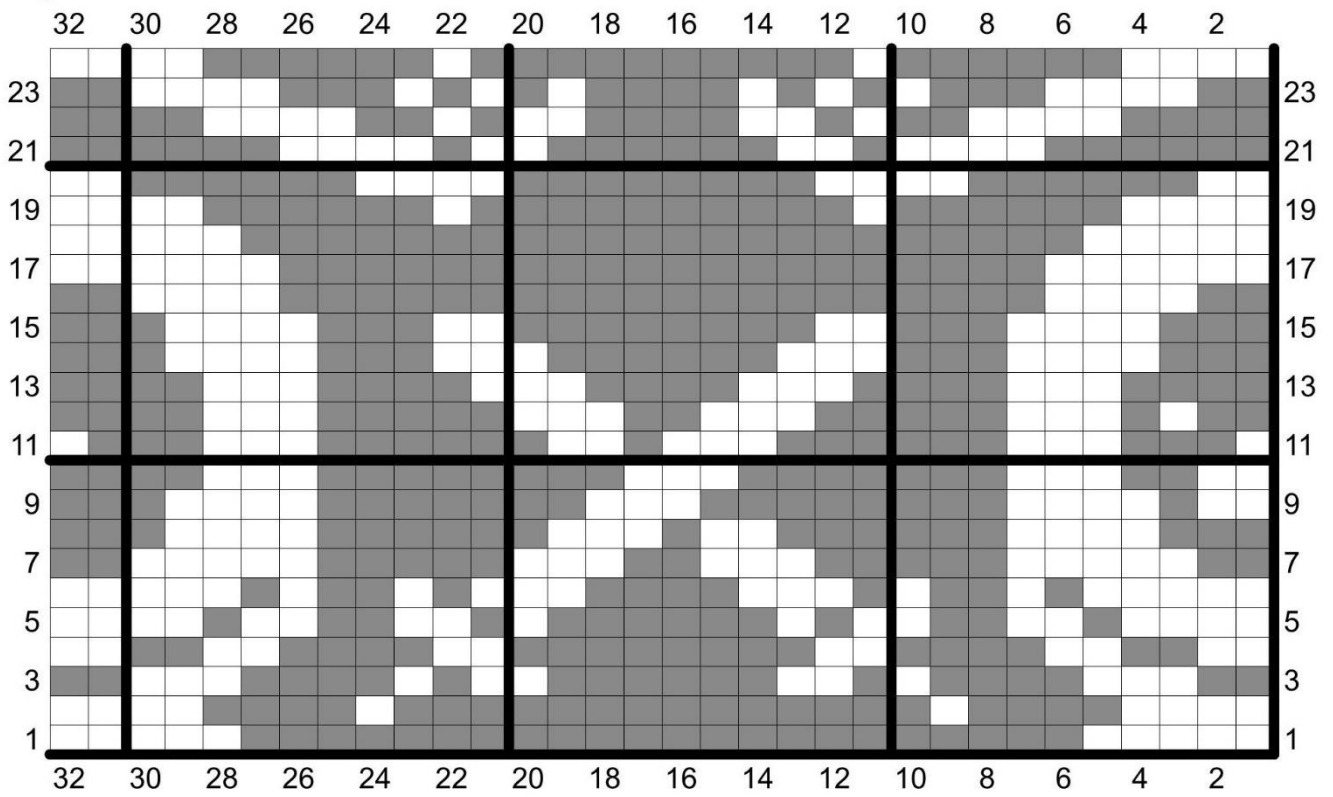


# Druid

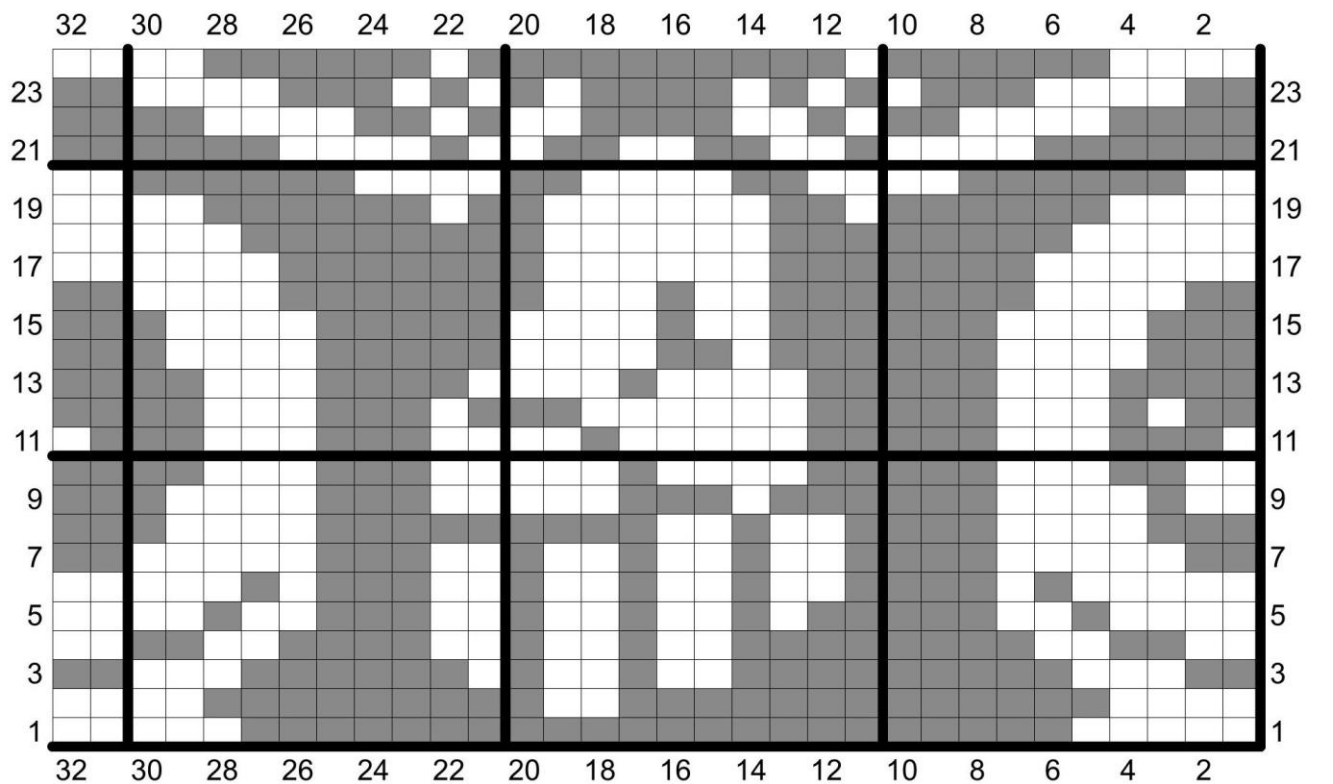




# Fighter

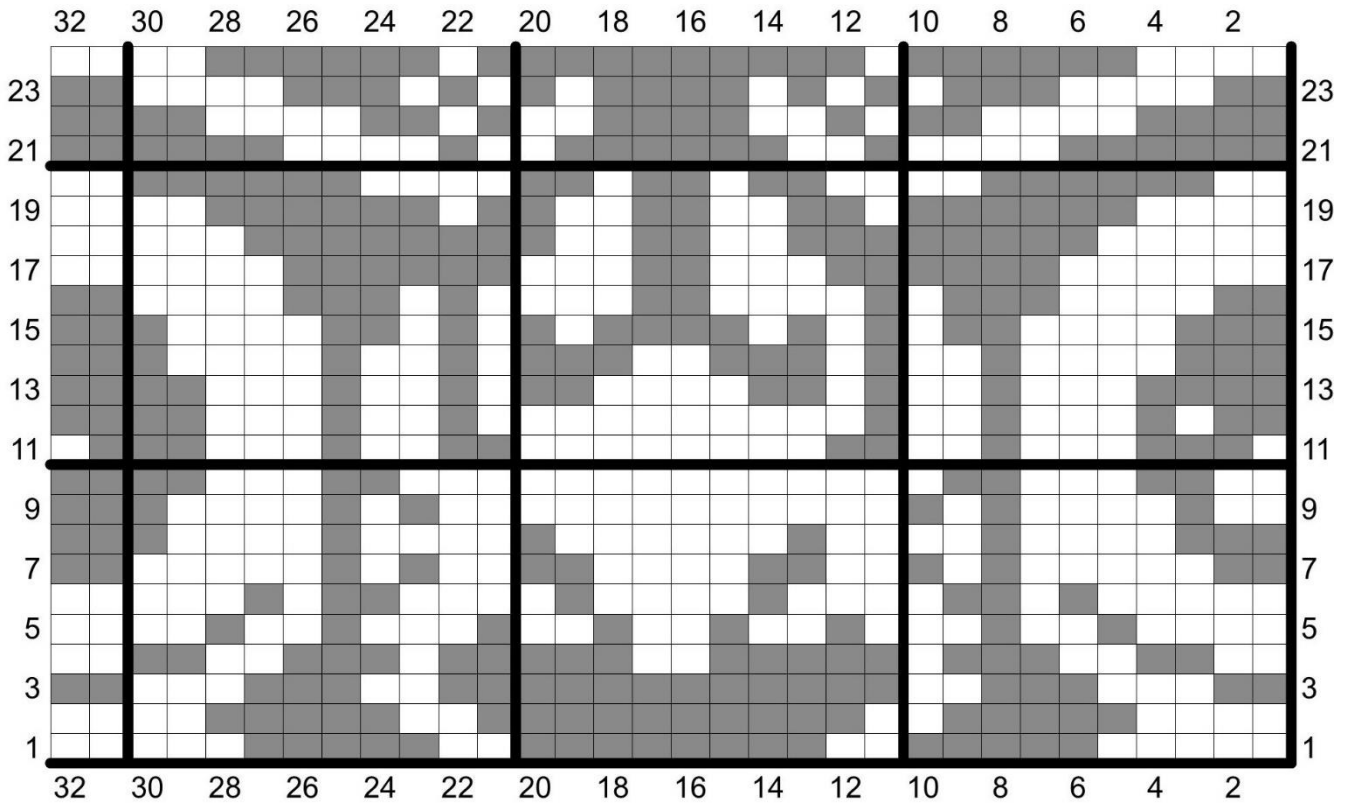


# Monk

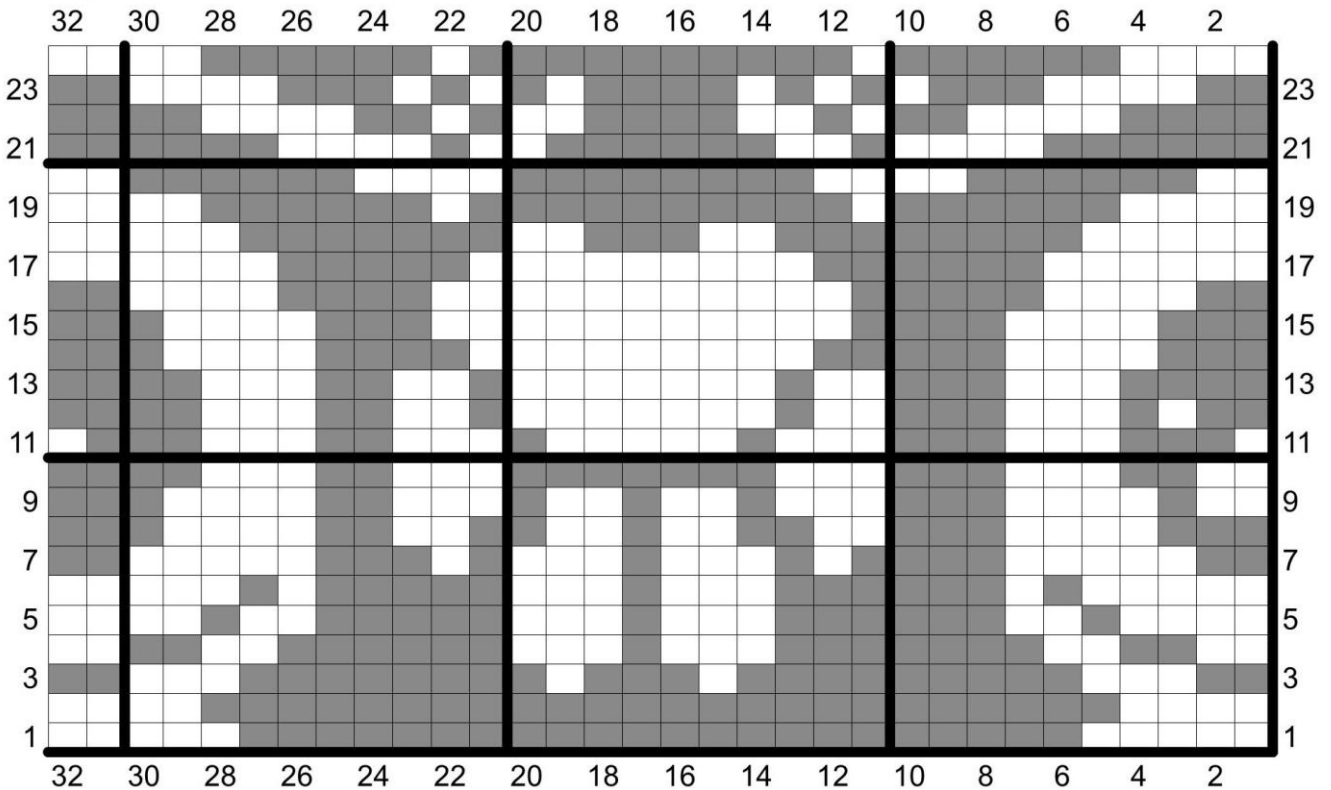




# Paladin

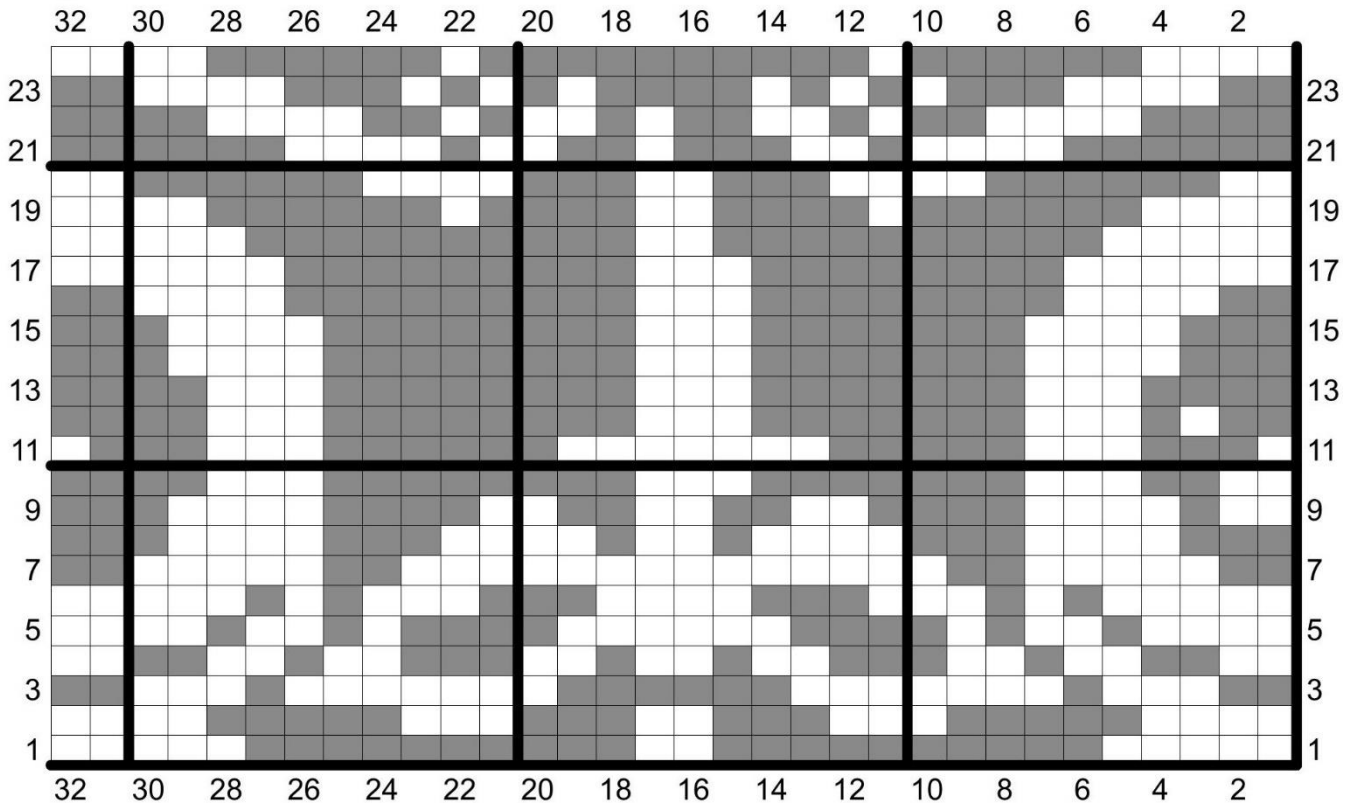


# Ranger

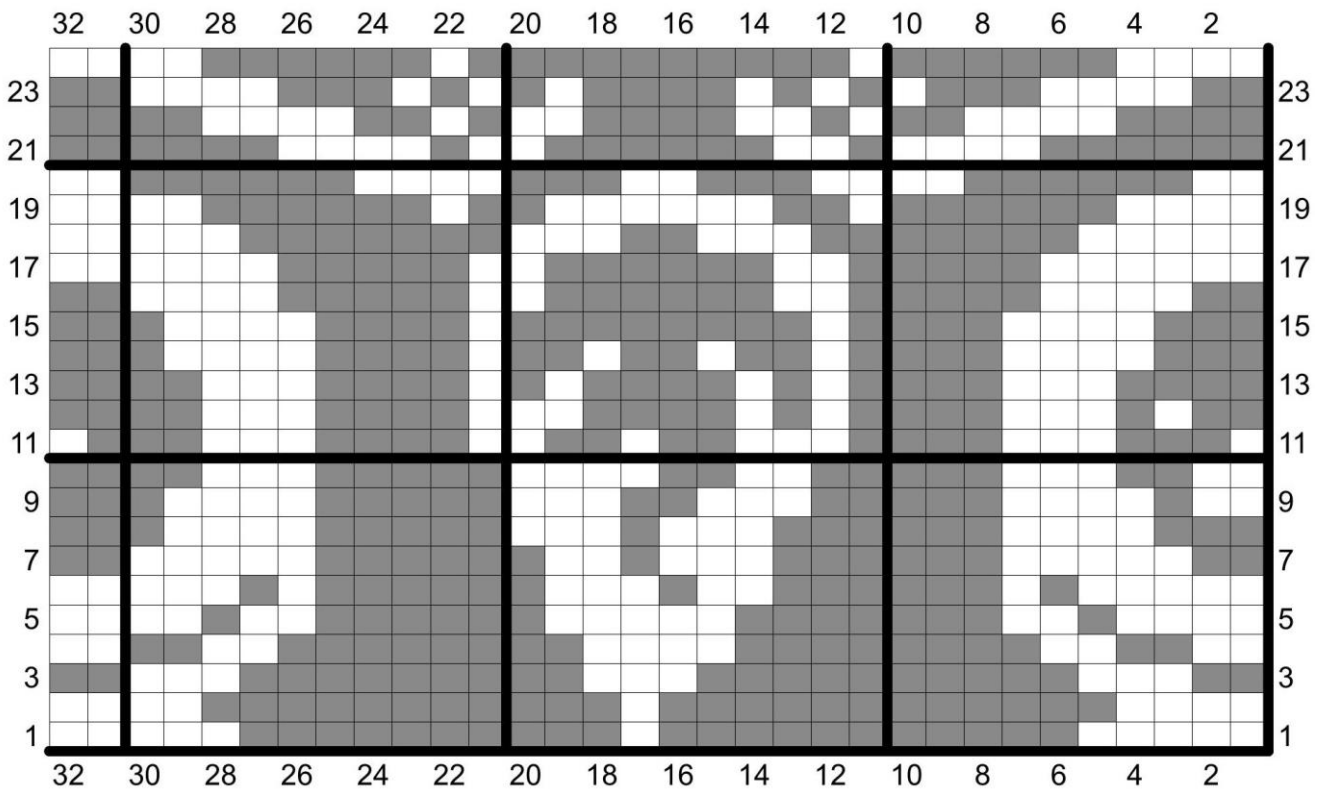




# Rogue



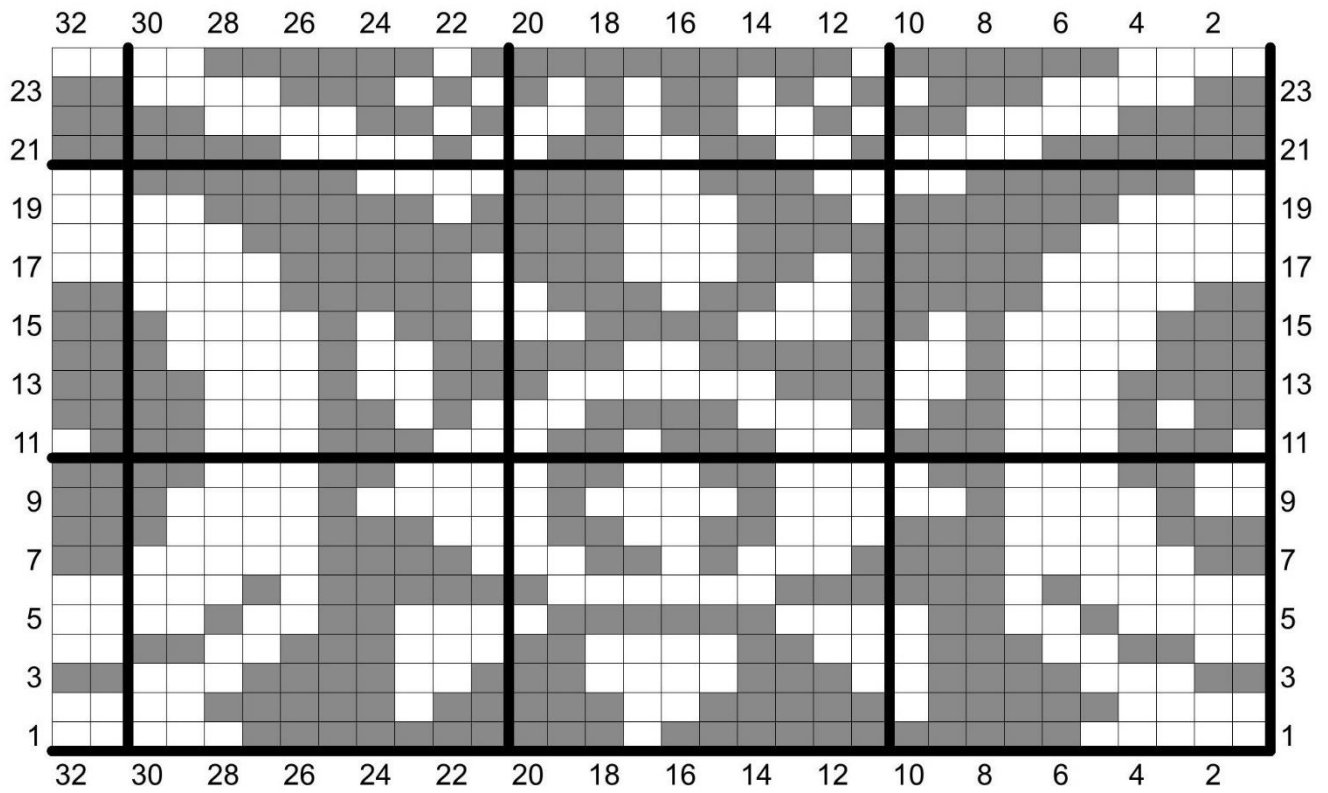
# Socerer



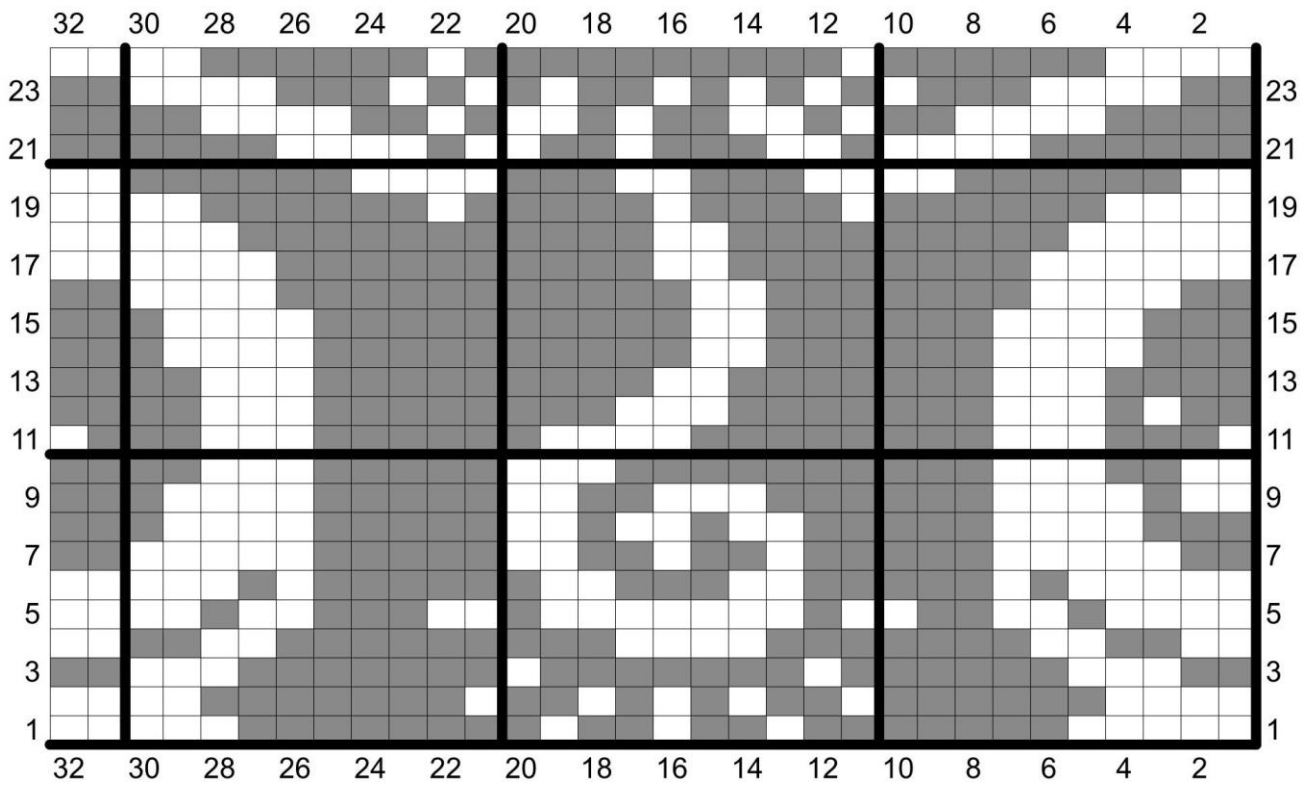




# Warlock

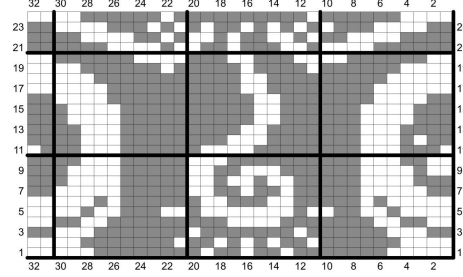


# Wizard

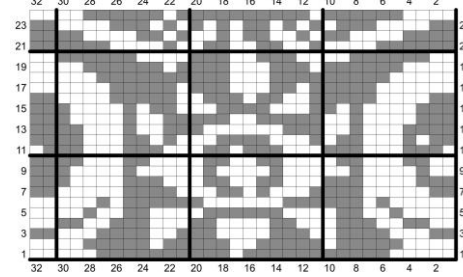




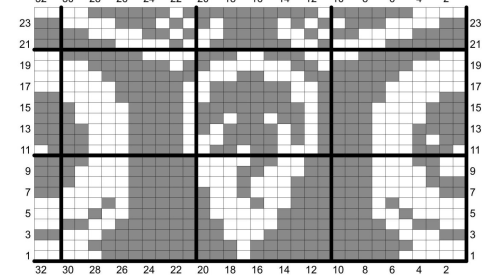
Wizard



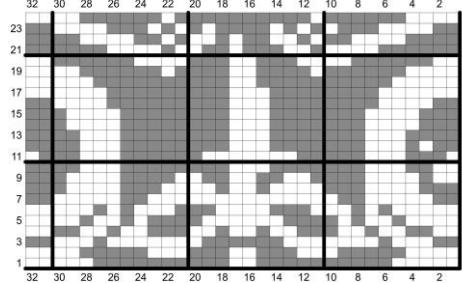
Warlock



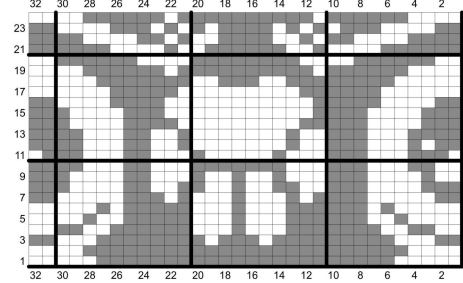
Sorcerer



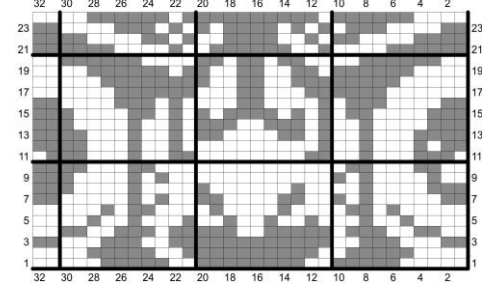
Rogue



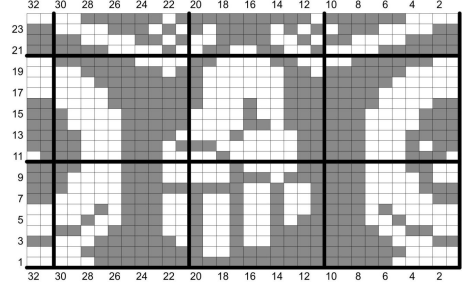
Ranger



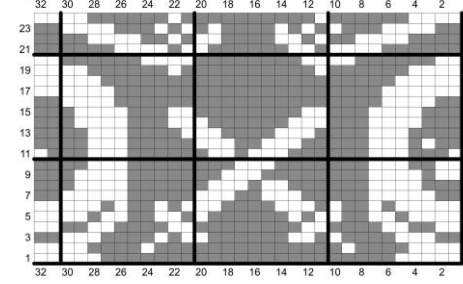
Paladin



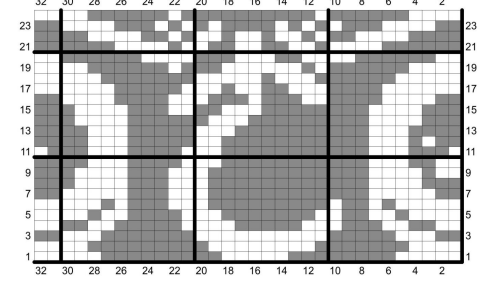
Monk



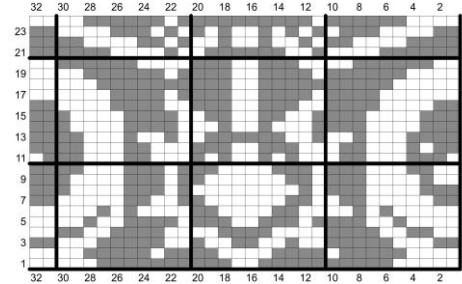
Fighter



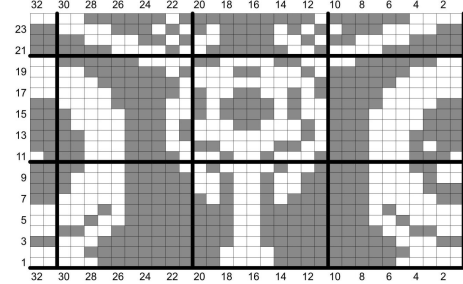
Druid



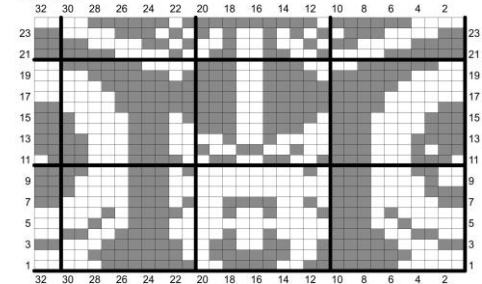
Cleric



Bard



Barbarian



CP Logo

