

LATTES & LLAMAS PRESENTS

# Untitled Goose Socks

THE FIRST GEEK-A-LONG SOCKS OF 2023



*The Geek-A-Long (GAL) supports Child's Play Charity, which provides games and consoles to children in hospitals and domestic violence shelters. The sample socks made by Lattes & Llamas will be auctioned off at the annual Child's Play Charity gala in December. We encourage GAL participants to donate to CP Charity via our [sanctioned widget](#) in lieu of paying for this pattern. No donation is too small!*



## Yarn

1 Lattes & Llamas [Untitled Goose Socks Kit](#) or a comparable sock weight yarn in three colorways.

Sample Size 2 used “Moiraine” as Color A, “Baskerville” as Color B, and “Plastic Pumpkins” as Color C on Lattes & Llamas [Vacation Yarn](#) (75% Superwash Merino, 25% Nylon; 463yds / 423m – 100g) featured in the Untitled Goose Socks Kit.

Color A: 208(232, 255, 283) yds / 190(207, 245, 262)m - 45(50, 55, 61) g  
Color B: 60(70, 79, 88) yds / 55(64, 72, 80)m - 13(15, 17, 19) g  
Color C: 83(93, 102, 116) yds / 76(85, 93, 106)m - 18(20, 22, 25) g

Note that yardage is estimated, includes the yardage required for knitting the swatch, and may vary depending on yarn used, gauge variations, or modifications.

When choosing your yarn, make sure Color A contrasts strongly with Color B. We recommend taking a photograph of the yarns together and then change it to black and white to see if they contrast strongly enough.

## Needles

US 1.5 / 2.5 mm and US 2.5 / 3.0 mm 40” circular needles to work in Magic Loop or size needed to obtain gauge.

We prefer the Magic Loop method when knitting socks. If you are more comfortable using DPNs or two circulars, this pattern is easily converted.

## Notions

2 Stitch Markers; Tapestry Needle; Tape Measure; Waste Yarn

## Gauge

32 sts and 40 rows = 4” / 10 cm in stranded colorwork, knit in the round with larger sized needles and blocked. See gauge swatch directions on page 4.

## Sizing

Size 1 (2, 3, 4) has a 7 (8, 9, 10)” / 17.75 (20.25, 22.75, 25.5) cm foot circumference, unstretched.

Leg length from to Cuff to Start of Heel: 5.5” / 14 cm

Foot Length: Adjustable

As with many colorwork socks, these were designed with little to no ease. Choose the size closest to your actual foot measurement. Stitch counts are written for size 1 with (2, 3, 4) size stitch counts in brackets.

## Abbreviation Key

BO	bind off
BOR	beginning of the rnd
CO	cast on
K	knit
Kfb	Increase: Knit into front loop and back loop of the same st. 1 st increased
K2Tog	knit 2 sts together
LHN	left hand needle
M	marker
P	purl
P2Tog	purl 2 sts together
PM	place marker
rnd(s)	round(s)
RHN	right hand needle
RS	right side
sl	slip
st(s)	stitch(es)
SSK	Slip Slip Knit: Sl 1 st knitwise, sl second st knitwise, move these 2 sts back to LHN purlwise, K2Tog through the back loop. 1 st decreased
SM	slip marker
W&T	Wrap and Turn (RS): sl 1 st purlwise from LHN to RHN, move working yarn to front between needles, transfer sl st back to LHN purlwise. Turn work. Move working yarn back to front sts as to purl the next st. Wrap and Turn (WS): sl 1 st purlwise from LHN to RHN, move working yarn to back between needles, transfer sl st back to LHN purlwise. Turn work. Move working yarn to back between sts as to knit the next st. wrong side
WS	wrong side





# Instructions

When working the stranded portions of the charts, catch floats longer than five stitches.

Stitch counts are written for size 1 with (2, 3, 4) size stitch counts in brackets.

Stitch repeats are shown in [brackets]. Repeat [bracketed instructions] to the stitch indicated. For example, if instructed to work [K1, P1] to last two sts, that means you will repeat K1, P1 until you reach the last two sts.

## TOE

With US 1.5 / 2.5 mm needles and Color C, cast-on 12(16, 20, 24) sts using Judy's Magic Cast-On method. PM to mark the BOR. [A tutorial is available on our YouTube Channel.](#)

**Rnd 1 (set-up):** K 6(8, 10, 12) sts, PM, K to end of rnd. Distribute stitches evenly across needles.


**Rnd 2 (increase):** [Kfb, K to 2 sts before M, Kfb, K1, SM] twice. – 4 sts increased

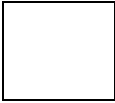
Repeat Rnd 2 an additional 4 times. 16 sts increased for a total of 32(36, 40, 44) sts on the needles.


**Rnd 3:** [K to M, SM] twice.

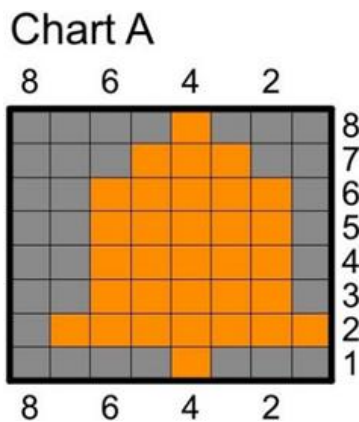
Repeat Rnds 2-3 an additional 6(7, 8, 9) times. 24(28, 32, 36) sts increased for a total of 56(64, 72, 80) sts on the needles.

**CHART KEY**

Color A 

Color B 

Color C 



## TO DO: TAKE BELL

Join Color A. Do NOT cut Color C.

**Rnd 1 (set-up):** With Color A, K to M, remove M, K to end of rnd.

**Rnd 2:** With Color A, Knit.

Change to US 2.5 / 3 mm needles.

**Rnds 3-10:** Work Chart A 7(8, 9, 10) times around.

Change to US 1.5 / 2.5 mm needles. Cut Color C.

**Foot Rnds:** With Color A and measuring from the CO, knit until foot measures 2" / 5 cm less than the desired foot length (from the heel to the longest toe).

## HEEL

**Set-Up Row 1:** K 28(32, 36, 40) sts.

Now you will work a short row heel over the next 28(32, 36, 40) sts. Move the remaining 28(32, 36, 40) sts you just knitted onto waste yarn or a stitch holder to be picked up later.

Join Color C. Do not cut Color A as it will be picked up later.

With Color C only, K 27(31, 35, 39), W&T.

**Set-Up Row 2 (WS):** P 26(30, 34, 38), W&T.

**Row 1 (RS):** K to 1 st before wrapped st, W&T.

**Row 2 (WS):** P to 1 st before wrapped st, W&T.

Repeat Rows 1-2 an additional 9(10, 11, 12) times for a total of 11(12, 13, 14) wraps on each side of the heel.

**Row 3 (RS):** K to first wrapped st. Pick up the wrap and place it on the needles next to the st it was wrapped around. K the st and wrap together. W&T.

**Row 4 (WS):** P to first wrapped st. Pick up the wrap and place it on the needles next to the st it was wrapped around. P the st and wrap together. W&T.

**Row 5 (RS):** K to the next wrapped st. Pick up both wraps and place them on the needles. K the st and wraps together. W&T.

**Row 6 (WS):** P to the next wrapped st. Pick up both wraps and place them on the needles. P the st and wraps together. W&T.



Repeat Rows 5-6 until all the wrapped sts have been worked and you are back at the outer corner of the heel with the RS facing. On the last 2 rows, there will be no next st to wrap, simply turn after knitting / purling the outside sts together with its wraps.

With Color A, knit across heel sts to the beginning of the rnd. Cut Color C.

## TO DO: TAKE THE KNIFE

Sizes -(2, 3, 4) will move the BOR M in rnd 8 to center the charts.

Cut Color C.

**Rnds 1-6:** With Color A, knit.

Join Color B. Do not cut Color A.

**Rnd 7:** With Color B, knit.

**Rnd 8 (set-up):** Remove BOR M; with Color B, K 0(2, 4 6), PM to indicate new BOR; K 28(32, 36, 40), PM to indicate the end of Chart C; K to new BOR.

Change to US 2.5 / 3 mm needles.

**Rnds 9-41:** Work Chart C to the 1st(2nd, 3rd, 4th) red index line only, SM; work Chart D to the 1st(2nd, 3rd, 4th) red index line only.

Change to US 1.5 / 2.5 mm needles. As you come to it, remove the side M indicating the end of Chart C.

**Rnds 42-43:** With Color B, knit.

Cut Color B.

**Rnd 44-45:** With Color A, knit.

## CUFF

**Rnd 1:** [K1, P1] to end of rnd.

Repeat Rnd 1 nine more times or until ribbing measures 1" / 2.5 cm.

Bind off using Jeny's Surprisingly Stretchy Bind Off or your favorite stretchy bind off method.

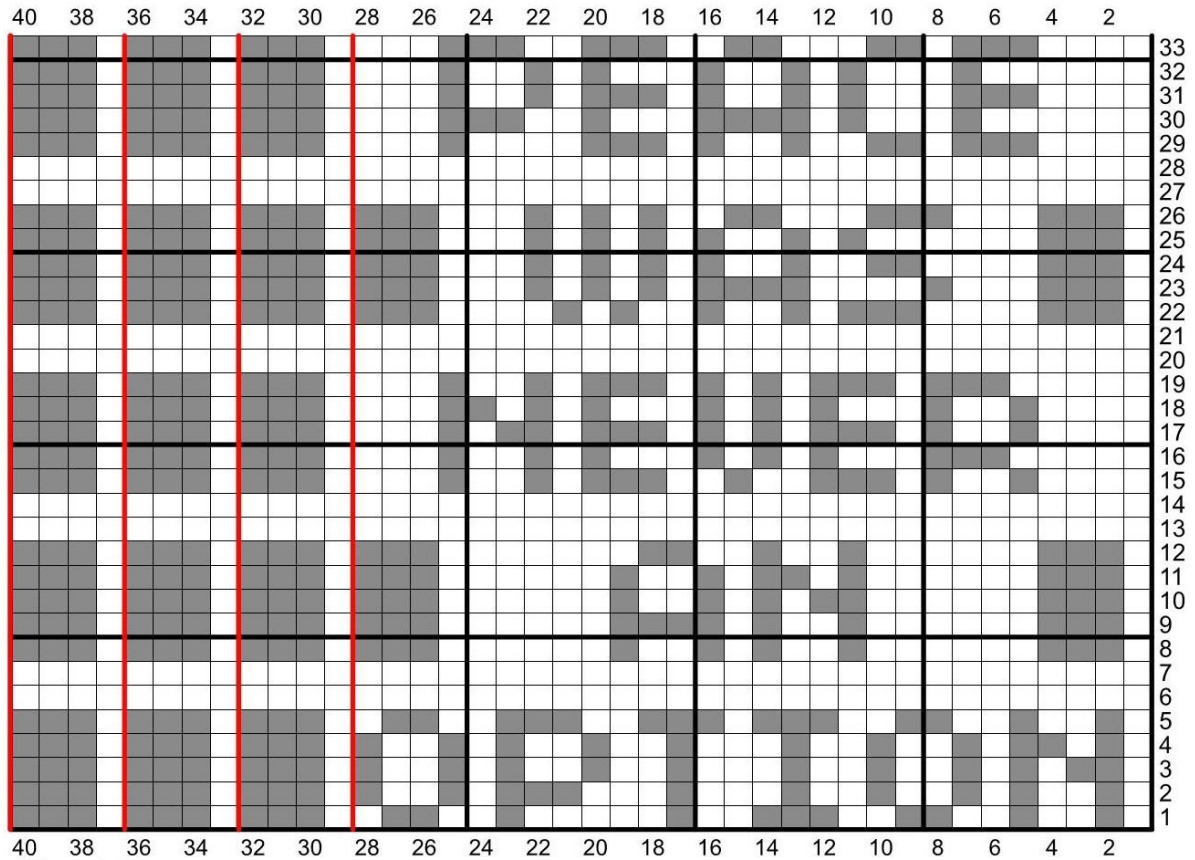
## FINISHING

Weave in ends. Wet block to measurements.

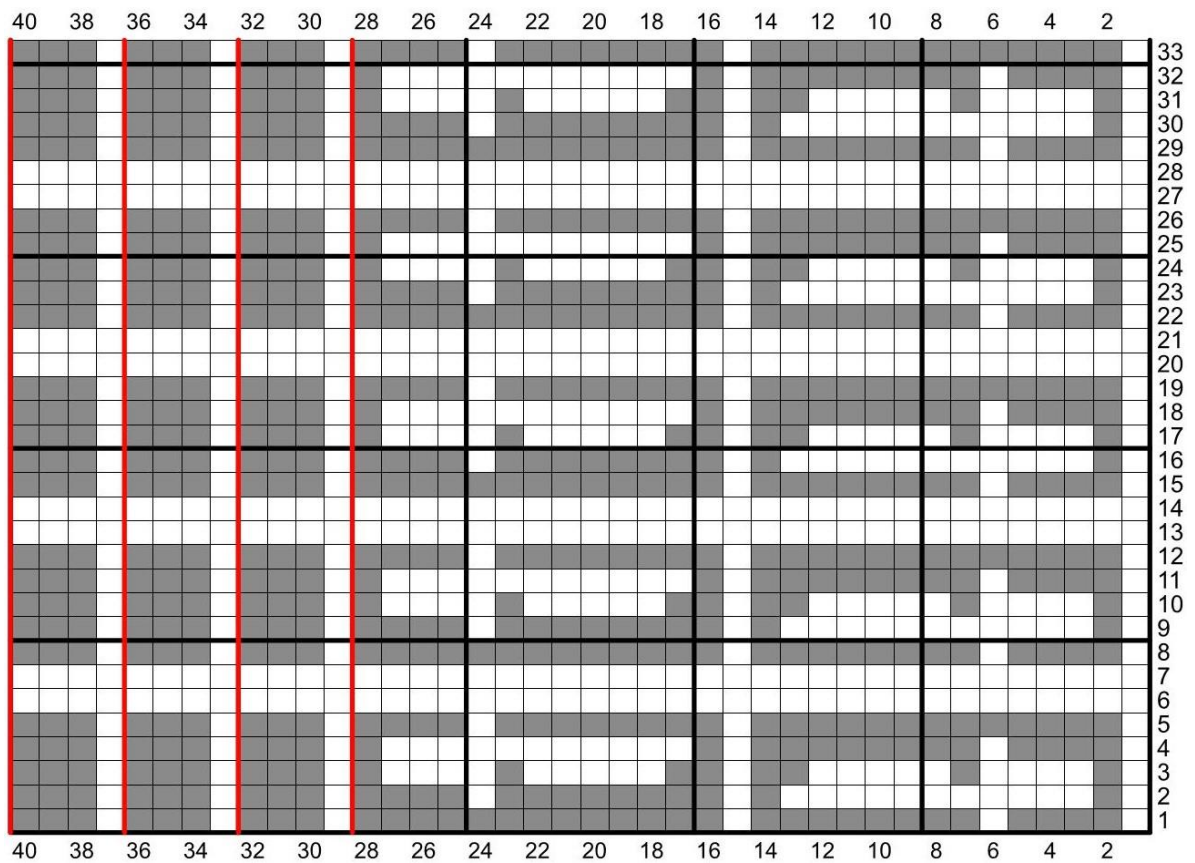




### Chart C



### Chart D







# More Colorwork from Lattes & Llamas



Frog Lilies



Queen Bee



Jackalope Equinox



Big Dice Energy



Cobwebs



Just Shire Things



Cat Nouveau Mitts



Raven Queen



Moonlit Magic