

LATTES & LLAMAS PRESENTS

Stray – Sock 1

THE FOURTH GEEK-A-LONG SOCKS OF 2022



The Geek-A-Long (GAL) supports Child's Play Charity, which provides games and consoles to children in hospitals and domestic violence shelters. The sample socks made by Lattes & Llamas will be auctioned off at the annual Child's Play Charity gala in December. We encourage GAL participants to donate to CP Charity via our [sanctioned widget](#) in lieu of paying for this pattern. No donation is too small!



Yarn

Fingering/Sock weight yarn in 3 contrasting colors.

Sample Size 4 used “Marigold” as Color A, “Cyborg” as Color B, and “Witchlight” as Color C on Lattes & Llamas [Vacation Yarn](#) (100 grams/ 438)

Colors A & B (each): 36(38, 40, 45) grams/ 160(165, 175, 200) yards

Color C: 10(12, 14, 16) grams/ 45(50, 55, 60) yards

Note that yardage is estimated and may vary depending on yarn used, gauge variations, or modifications. When choosing your yarn, make sure that Color A contrasts sharply with color B. We recommend taking a photograph of the yarns together, and then changing it into black and white to see if the colors contrast strongly enough.



Needles

US1 / 2.25 mm and US2 / 2.75 mm circular needles to work in Magic Loop or size needed to obtain gauge.

We prefer the Magic Loop method when knitting socks. If you are more comfortable using DPNs or two circulars, this pattern is easily converted.

Notions

Stitch Markers; Tapestry Needle; Tape Measure; Stitch Holder or Waste Yarn

Gauge

36 sts and 40 rows = 4” in stranded colorwork, knit in the round with larger sized needles and blocked. See gauge swatch directions on page 4.

Sizing

Size 1(2, 3, 4) has a 7.11(8, 8.88, 9.7) inch foot circumference.

As with many colorwork socks, these were designed with little to no ease. Choose the size closest to your actual foot measurement. Stitch counts are written for size 1 with (2, 3, 4) size stitch counts in brackets. Sample shown is a size 4 on a man’s foot with a 9.5-inch circumference, who wears a US size 10 shoe.

Abbreviation Key

CO	cast on
K	knit
K2Tog	knit 2 sts together
M	marker
P	purl
P2Tog	purl 2 sts together
PM	place marker
rnd(s)	round(s)
RS	right side
sl	slip
st(s)	stitch(es)
SKS	Slip, Knit, Slip: sl 1, K1, pass slipped st over the K1 – 1 st decreased
SM	slip marker
wyib	with yarn in back
wyif	with yarn in front
WS	wrong side



History of the Geek-A-Long

First imagined in the Winter of 2013, the Geek-A-Long (GAL) was born from unrestrained idealism and way too much coffee. The idea was ridiculous: Release a new pattern every week all year, based on pop-culture nerdiness. At the end of the year, we would join 48 double-sided squares together to make a massive blanket. Our Fandom Opus would be sent to the Child's Play Charity Dinner Auction in Seattle, and the proceeds of the sale would go towards providing video games and other entertainment to children in hospitals and domestic violence shelters.

When Megan-Anne cast on that first square, she had no idea what the GAL would turn into. Seven years, seven blankets, and nearly 300 squares later, the Geek-A-Long has grown far beyond us. The community has grown each year and based on our square download statistics there are GAL knitters in every corner of the world. Your generosity is astounding. The GAL community has raised over \$10,000 for Child's play with individual donations and proceeds raised from the sale of the auctioned blankets.

We wanted to do something to make 2020 memorable. Admittedly, that decision was made in 2019, and 2020 doesn't need help standing out. Still, we wanted to shake things up. When Megan-Anne finished knitting that first blanket in 2014, we never imagined we'd still be making them in 2020. We are blown away by how much love and support the project has gotten and couldn't have predicted it. We want you to see [Eight Bit](#), [On Board](#), and now these socks for what they are: a love letter from us to the entire GAL community.



© *Lattes & Llamas*

All rights reserved. You may not sell, redistribute, or publish this pattern. This pattern is for personal use only. However, if you wish to sell your socks or an item made using this pattern for the benefit of Child's Play Charity, please follow the guidelines set forth by CP Charity to ensure that 100% of the proceeds go to CP Charity. If you use this color chart in one of your designs and wish to share it with others, it must be free and Lattes & Llamas must be given appropriate credit along with a link to our website and the [Child's Play Charity Widget](#).

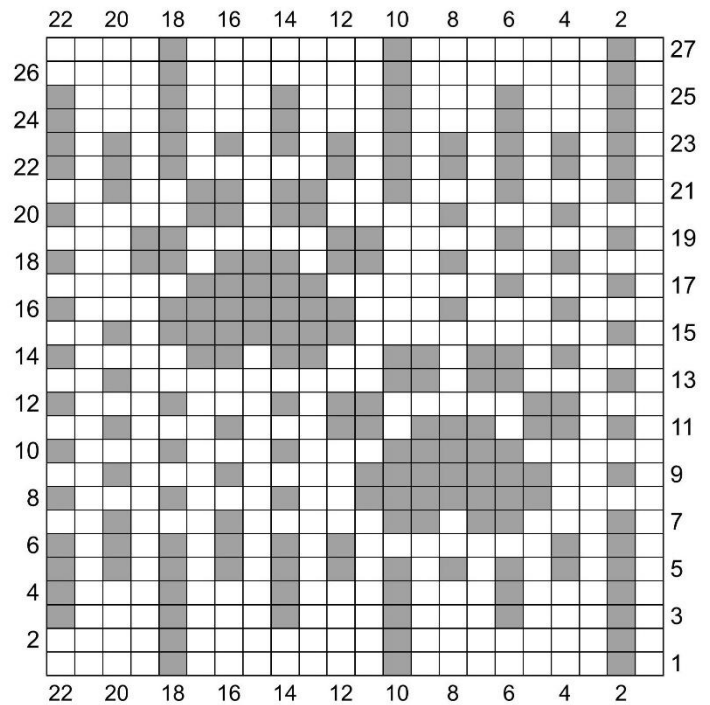


Gauge Swatch

This is a functional gauge swatch, which means that not only will you be able to accurately assess your gauge while being certain that the colorways contrast strongly enough, but you will walk away with a cute and reusable coffee cup sleeve. They are small enough to keep tucked in your bag or the center console of your car to use instead of the cardboard ones many coffee shops offer.



Toe Beans Swatch



RIBBING

With Smaller needles and Color C, CO 88 sts using your favorite stretchy CO. Distribute stitches evenly across needles and join to work in the round, careful not to twist the sts. PM to mark beginning of the rnd.

Rnds 1-4: [K1, P1] around.

Change to larger needles after ribbing round 4.

COLORWORK

Row numbers are shown on both sides of the chart to make tracking your row easier, but always read the chart from right to left. When working the chart, catch floats longer than five stitches.

Join Color B.

Rnds 1-5: Work the swatch chart 4 times around, using Color C for the white squares and color B for the gray squares. At the end of round 6, break color B.

Join Color A

Rnds 6-22: Use Color A for the white square and Color B for the gray squares. At the end of round 22, break Color A.

Join color C

Complete the remainder of the chart using Color C for the white squares and Color B for the gray squares. After completing round 27, break Color B and change to smaller needles. Repeat Rnds 1-4 from the RIBBING section. Bind off loosely, using your favorite stretchy BO.

FINISHING

Weave in ends and block. After it is dry, check your gauge. If you have not already done so, now is a wonderful time to take a photograph of your swatch and change it to black and white to be certain that the contrast is strong enough so that the colorwork will not be muddled.



Instructions

The Stray Socks are worked in the round from the cuff down. This sock pattern is recommended for knitters with experience working in the round, stranded/fair-isles colorwork, and turning aheel. Stitch repeats are shown in [brackets]. Repeat [bracketed instructions] to the stitch indicated. For example, if instructed to work [K1, P1] to last two sts, that means you will repeat K1 P1 until you reach the last two sts. **Note that the two socks are different. This pattern is not conducive to working two-at-a-time socks.**

Sock 1

CUFF

With smaller needles and Color C, CO 64(72, 80, 88) sts using your favorite stretchy CO. Distribute sts evenly across needles and join to work in the round, careful not to twist the sts. PM to indicate the beginning of the rnd.

Rnds 1-12: [K1, P1] around.

K 1 round, then continue to LEG section.

LEG

Work the white squares in Color A and work the gray squares in Color B. The charts should always be read from right to left. When working the charts, catch floats longer than five stitches.

Break color C and join colors A & B. Change to larger needles.

Rnd 1 (set-up): Beginning on column 7(5, 3, 1) and ending on column 38(40, 42, 44) work first row of the STRAY Chart, PM. Beginning on column 7(5, 3, 1) and ending on column 38(40, 42, 44) work first row of the TOE BEANS A chart to end.

Now you will continue to work the charts until they are completed.

Rnds 2-39: Note that you will work row 40 of the STRAY chart in the next section. Beginning on column 7(5, 3, 1) and ending on column 38(40, 42, 44) work the STRAY chart to the marker and the TOE BEANS A chart to the end.

HEEL FLAP

Set-Up: Remove the marker indicating beginning of round. Beginning on column 7(5, 3, 1) and ending on column 38(40, 42, 44) work last row of the STRAY Chart, remove marker. Move the 32(36, 40, 44) sts just worked to waste yarn or a stitch holder to be picked up later.

You will now work a slipped stitch heel with the smaller needles, using only Color C across the 32(36, 40, 44) sts remaining on your needles.

Cut colors A&B and join color C. Change to smaller needles.

Row 1 (Right Side): [Sl 1 wyib, K1] to end of row, turn.

Row 2 (Wrong Side): Sl 1 wyif, P to end of row, turn.

Repeat Rows 1-2 17(19, 21, 23) more times for a total of 36(40, 44, 48) total rows and 18(20, 22, 24) sl sts on each side of the heel flap. Continue to HEEL TURN.

HEEL TURN

The “gap” in the instructions below refers to the space created between the ‘P1, turn’ or ‘K1, turn’ of the previous row.

Row 1 (RS): Sl 1 wyib, K18(20, 22, 24), SKS, K1, turn.

Row 2 (WS): Sl 1 wyif, P7, P2Tog, P1, turn.

Row 3: Sl 1, K to 1 st before the gap, SKS, K1, turn.

Row 4: Sl 1, P to 1 st before the gap, P2Tog, P1, turn.

Repeat Rows 3-4 until 20(22, 24, 26) sts remain, ending after a Row 4. Continue to GUSSET SET-UP section.



GUSSET SET-UP

Break color C and join color A. Change to larger needles.

With RS facing and larger needles, Sl 1 wyib, K across the remaining 19(21, 23, 25) sts from the HEEL TURN section. Pick up and knit 1 st in each of the next 18(20, 22, 24) sl sts along the first edge of the heel flap. **PM to signify beginning of the rnd.**

Join Color B. Transfer the 32(36, 40, 44) sts from your waste yarn or stitch holder back to your needles.

Beginning on column 7(5, 3, 1) and ending on column 38(40, 42, 44) work row 1 of the ADVENTURE CAT chart. Place marker to indicate the end of the top of the foot/the beginning of the gusset.

Cut color B. With Color A only, pick up and knit 1 st in each of the next **13(16, 19, 22)** sl sts along the second edge of the heel flap; PM. Pick up and knit the 5(4, 3, 2) remaining sl sts along the edge of the heel flap. *18(20, 22, 24) total sts have been picked up and knit along this edge.* K across the next 25(26, 27, 28) sts; PM. K 13(16, 19, 22) to the end of the round.

There should now be 88(98, 108, 118) total sts on the needles. **Distribute sts evenly across the needles.** Continue to GUSSET section.

GUSSET

Now you will work the CAT ADVENTURE Chart across the top of the foot, the GUSSET and BEANS! A charts across the bottom of the foot, and begin decreasing at the top of each gusset every other rnd until 24(26, 28, 30) sts are decreased and 64(72, 80, 88) sts remain on the needles.

Please note that all sizes will work all 52 rows of the CAT ADVENTURE chart and began that chart on row 1 (that first row was worked during the gusset set up instructions). At the same time, the beginning row for the GUSSET and BEANS! Charts will be dependent on size. To save yourself from possible confusion or from having to frog anything, I strongly recommend crossing out with a marker any rows of the GUSSET and BEANS! Charts that you won't work for your size.

For example, if working size 1 you will begin those charts on row 7, so you would cross out rows 1-6 of the charts. Size 2 will begin on row 5: cross out rows 1-4. Size 3 will begin on row 3: cross out rows 1-2. Size 4 begins on row 1.

Join Color B.

Gusset Rnds: Beginning on **row 2** and with column 7(5, 3, 1), work the CAT ADVENTURE chart through column 38(40, 42, 44), SM; beginning with row 7(5, 3, 1), work the GUSSET R1 chart until you reach the blue(red, yellow, green) border, Sl M. Work the BEANS! A chart to the next marker, Sl M. Beginning on row 7(5, 3, 1) and at the first st after the blue(red, yellow, green) border, work the GUSSET L1 chart to the end of the round.

Continue as established, working the CAT ADVENTURE chart to the first marker, then the GUSSET R1, BEANS! A, and GUSSET L1 charts to the end of the round until you have completed the last row of the GUSSET and BEANS! A Charts. Note that while working this section you will not be on the same row number for the CAT ADVENTURE chart as you are for the GUSSET charts. Don't over think that. You will continue working the CAT ADVENTURE chart in the next section after you have completed the final row of the GUSSET charts.

As you complete the final row of the GUSSET charts, remove the markers placed on either side of the BEANS! A charts (markers 2 and 3) but leave the markers that indicate the BoR and the end of the top of the foot.

FOOT

Foot Rnds: Beginning with column 7(5, 3, 1) continue the CAT ADVENTURE chart to the first marker, then work the TOE BEANS B chart to end.

When you have completed the CAT ADVENTURE chart repeat row 52 of the CAT ADVENTURE chart across the top of the foot and continue working the TOE BEANS B chart across the bottom of the foot until the sock measures 2(2, 2.25, 2.5) inches less than the final desired length. If you're able to try on the sock, it should reach the base of your pinkie toe. Continue to the TOE section.



TOE

Cut colors A and join color C.

Rnds 1-2: [K1 with color B, K1 with color C] around.

Rnd 3 (decrease): With color B, K1. With Color C, SKS. With colors C and B work in pattern maintaining the stripes from round 1 to 3 sts before the marker. With C, K2tog. With B, K1, slip marker, K1. With Color C, SKS. Work in established stripes to 3 sts before BoR. With color C, K2tog. With B, K1. – 4 sts decreased

Rnd 4: K all sts around, maintaining the stripes from the prior round (so work all B sts with B and all C sts with C).

There are now 60(68, 76, 84) sts on the needles. **Repeat Rnds 3-4 an additional 4(5, 6, 7) times.**

Round 5: Work as for round 3, but between the decreases work stripes as 3 sts color C, 1 st color B (rather than 1C1B, work 3C1B).

Rnd 6: K all sts around, maintaining the stripes from the prior round (so work all B sts with B and all C sts with C).

Round 7: Work as for round 5, but between the decreases work stripes as 7 sts color C, 1 st color B (rather than 3C1B, work 7C1B).

Rnd 8: K all sts around, maintaining the stripes from the prior round (so work all B sts with B and all C sts with C). 36(40, 44, 48) sts remain on the needles.

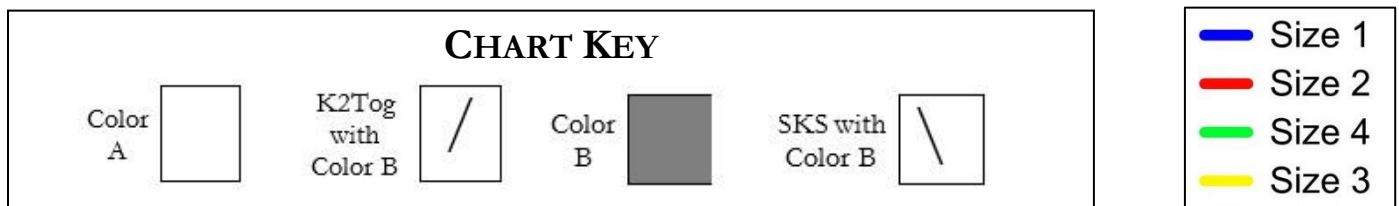
Cut Color B and change to smaller needles.

Now you will begin decreasing every round working with just color C on the smaller needles. Work all rounds as K1, SKS, K to 3 before Marker, K2tog, K1, slip marker, K1, SKS, K to 3 before BoR, K2tog, K1 until 16(20, 24, 28) sts remain on the needles.

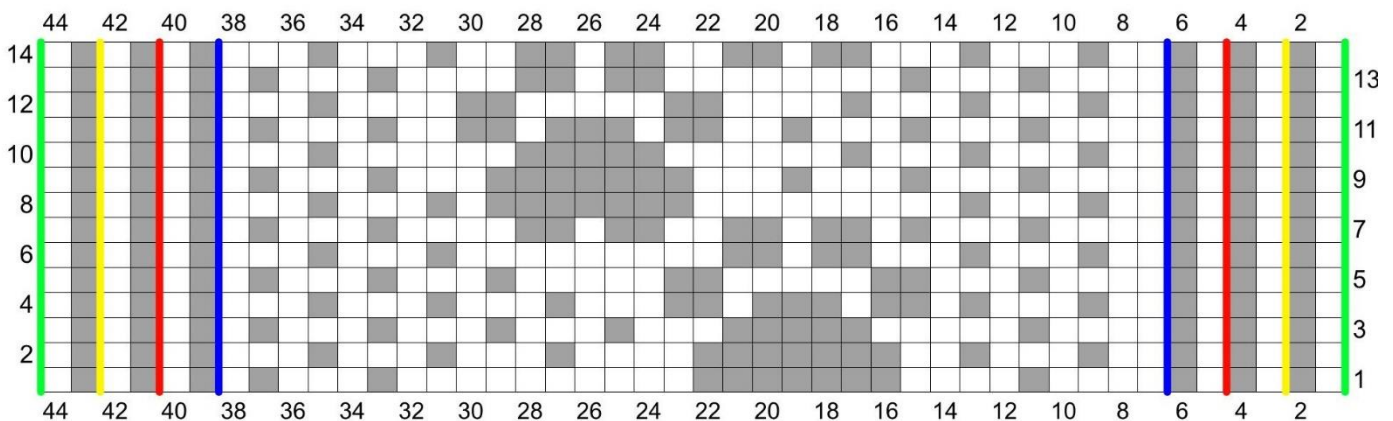
Cut the yarn leaving a 12-inch tail. Graft the remaining sts together using the Kitchener stitch. Weave in ends and block.

Charts

Numbers are provided on either side of the charts to help you keep your place, however charts should be worked in the round and read from right to left on every round.

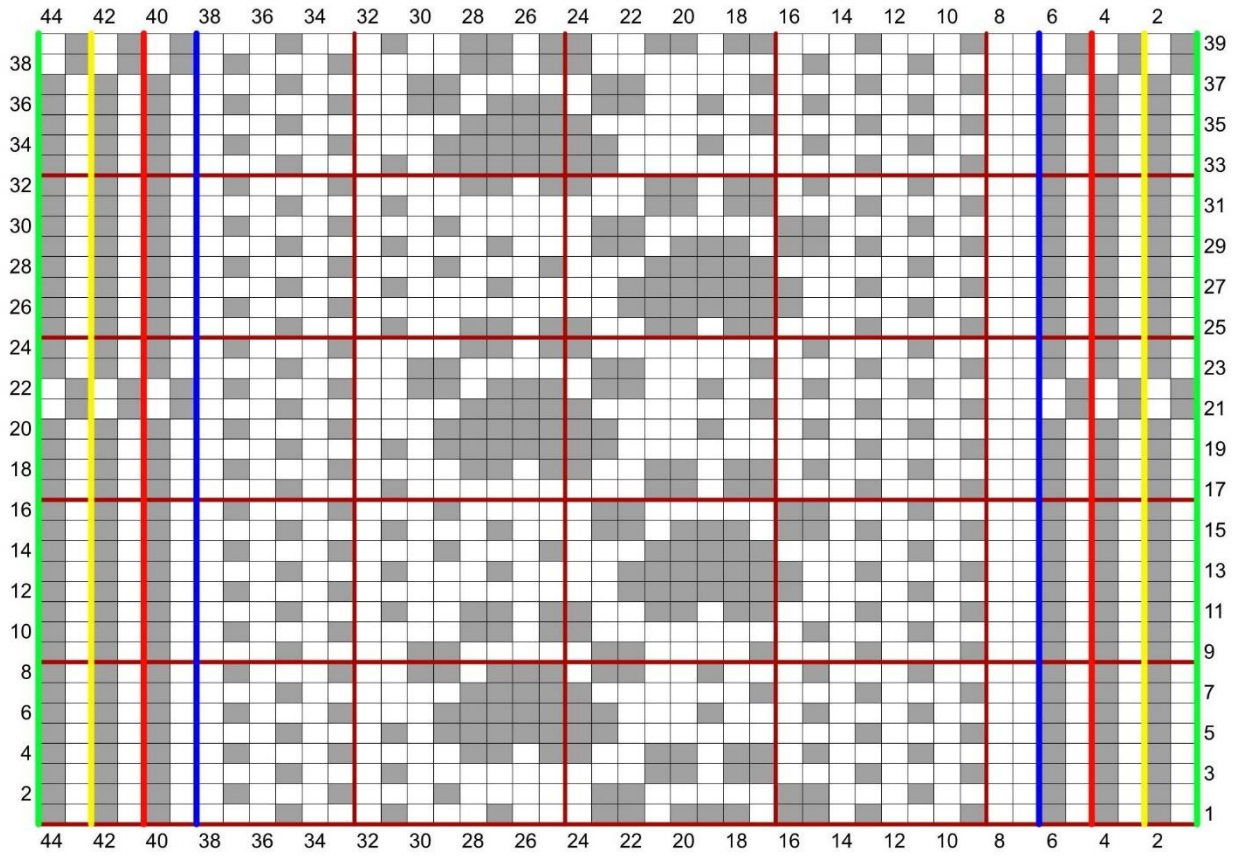


TOE BEANS B



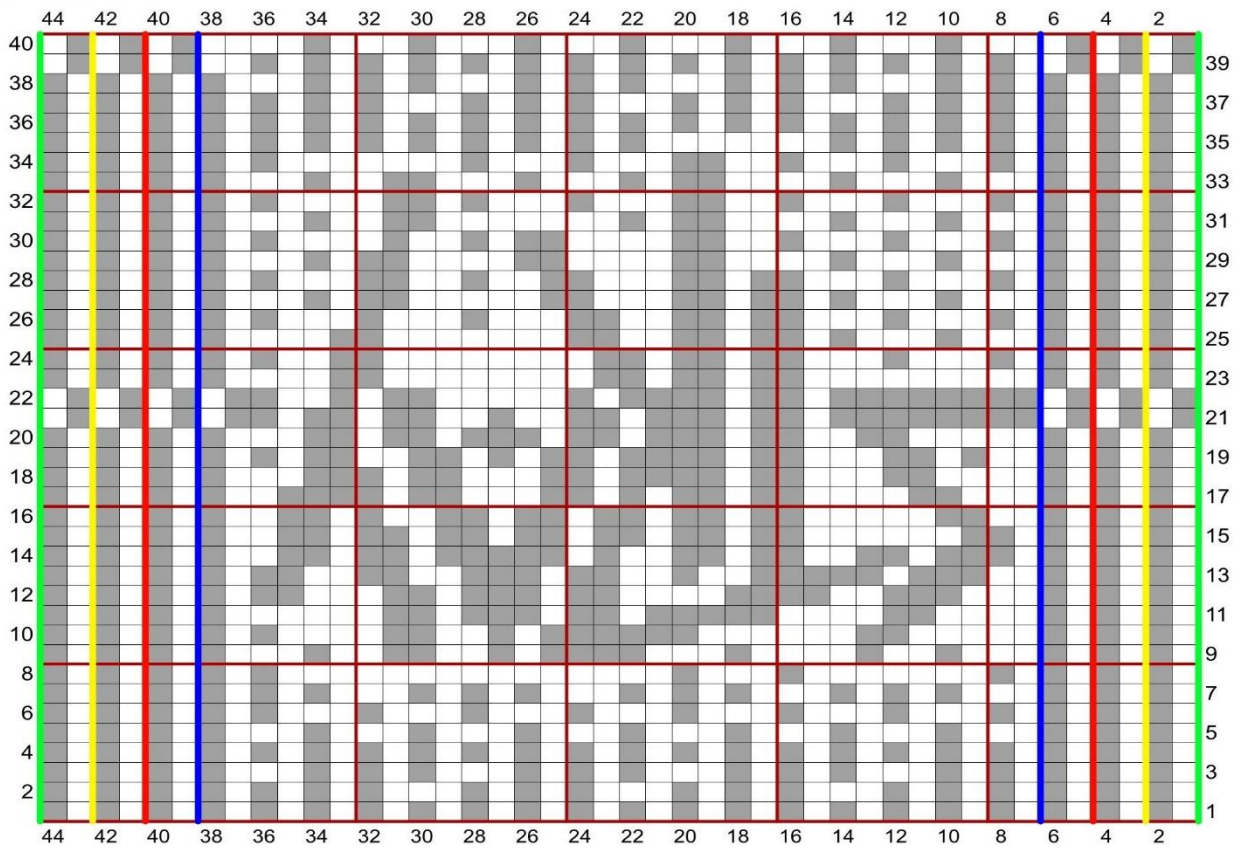


TOE BEANS A



Leg

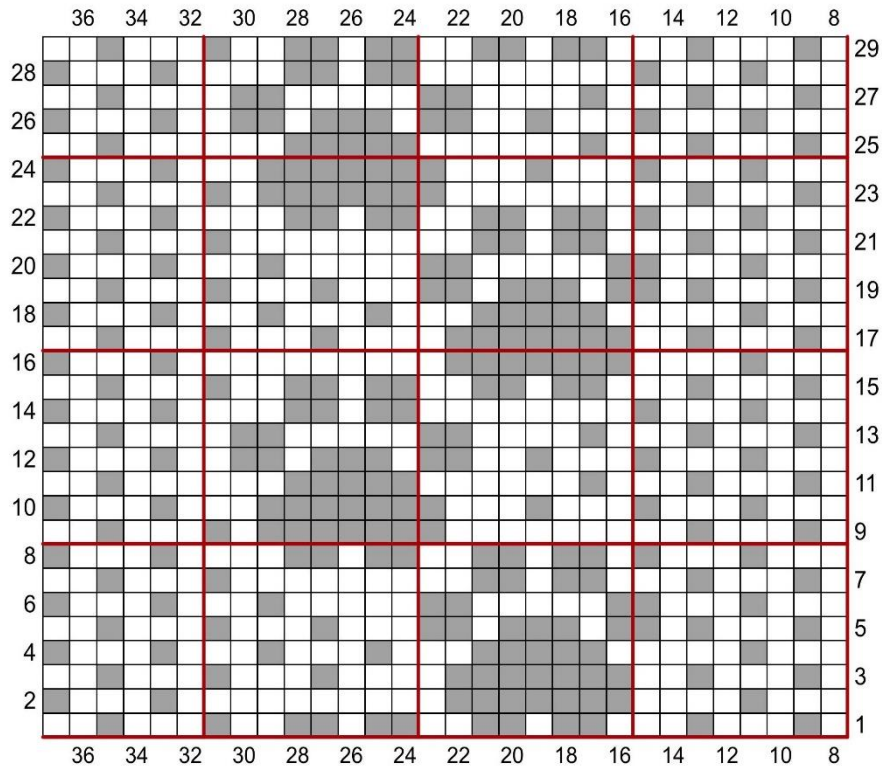
STRAY



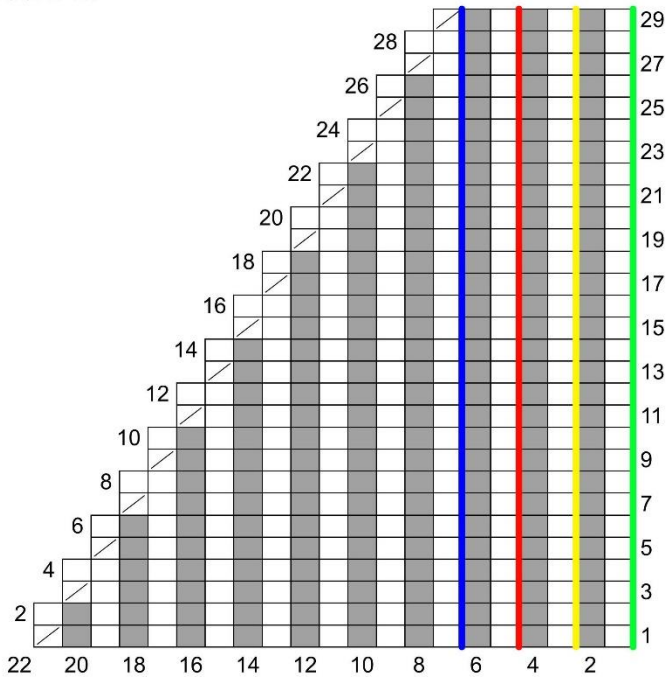


Gusset

BEANS! A



GUSSET L1



GUSSET R1

