

LATTES & LLAMAS PRESENTS

Legend of Zelda – Clue 4

THE SECOND GEEK-A-LONG SOCKS OF 2022

Lattes & Llamas

THE LEGEND OF
ZELDA

A GEEK-A-LONG SOCK

A New Clue Every Sunday
#geekalong @lattesandllamas

Lattes & Llamas 2022 Year of the Sock Zelda Sock
Knit of a comparable fingering weight yarn in 4

The Geek-A-Long (GAL) supports Child's Play Charity, which provides games and consoles to children in hospitals and domestic violence shelters. The sample socks made by Lattes & Llamas will be auctioned off at the annual Child's Play Charity gala in December. We encourage GAL participants to donate to CP Charity via our [sanctioned widget](#) in lieu of paying for this pattern. No donation is too small!

Yarn



colorways. It is certainly possible to work this sock in only 2 colors, but we recommend using 4.

Sample Size 4 used “Kamala Kahn” as Color A, “Gilded” as Color B, Cyborg as Color C, and Blue Ajah as Color D on Lattes & Llamas [Vacation Yarn](#) (100 grams/ 438) featured in the [“Zelda” Yarn Kit in special edition 50 gram skeins](#).

Color A: 26(28, 30, 35) grams/ 115(122, 132, 155) yards
 Color B: 38(40, 42, 44) grams/ 168(175, 184, 194) yards
 Color C: 26(28, 30, 35) grams/ 115(122, 132, 155) yards
 Color D: 26(28, 30, 35) grams/ 115(122, 132, 155) yards



Note that yardage is estimated and may vary depending on yarn used, gauge variations, or modifications. When choosing your yarn, make sure that all 4 colors contrast sharply with each other. We recommend taking a photograph of the yarns together, and then changing it into black and white to see if the colors contrast strongly enough.

Needles



US1 / 2.25 mm and US2 / 2.75 mm circular needles to work in Magic Loop or size needed to obtain gauge.

We prefer the Magic Loop method when knitting socks. If you are more comfortable using DPNs or two circulars, this pattern is easily converted.

Notions

3 Stitch Markers; Tapestry Needle; Tape Measure; Stitch Holder or Waste Yarn

Gauge

36 sts and 40 rows = 4” in stranded colorwork, knit in the round with larger sized needles and blocked. See gauge swatch directions on page 4.

Sizing

Size 1(2, 3, 4) has a 7.11(8, 8.88, 9.7) inch foot circumference.

As with many colorwork socks, these were designed with little to no ease. Choose the size closest to your actual foot measurement. Stitch counts are written for size 1 with (2, 3, 4) size stitch counts in brackets. Sample shown is a size 4 on a man’s foot with a 9.5-inch circumference, who wears a US size 10 shoe.

Abbreviation Key

| | |
|--------|--|
| CO | cast on |
| K | knit |
| K2Tog | knit 2 sts together |
| M | marker |
| P | purl |
| P2Tog | purl 2 sts together |
| PM | place marker |
| rnd(s) | round(s) |
| RS | right side |
| sl | slip |
| st(s) | stitch(es) |
| SKS | Slip, Knit, Slip: sl 1, K1, pass slipped st over the K1 – 1 st decreased |
| SM | slip marker |
| wyib | with yarn in back |
| wyif | with yarn in front |
| WS | wrong side |



History of the Geek-A-Long

First imagined in the Winter of 2013, the Geek-A-Long (GAL) was born from unrestrained idealism and way too much coffee. The idea was ridiculous: Release a new pattern every week all year, based on pop-culture nerdiness. At the end of the year, we would join 48 double-sided squares together to make a massive blanket. Our Fandom Opus would be sent to the Child's Play Charity Dinner Auction in Seattle, and the proceeds of the sale would go towards providing video games and other entertainment to children in hospitals and domestic violence shelters.

When Megan-Anne cast on that first square, she had no idea what the GAL would turn into. Seven years, seven blankets, and nearly 300 squares later, the Geek-A-Long has grown far beyond us. The community has grown each year and based on our square download statistics there are GAL knitters in every corner of the world. Your generosity is astounding. The GAL community has raised over \$10,000 for Child's play with individual donations and proceeds raised from the sale of the auctioned blankets.

We wanted to do something to make 2020 memorable. Admittedly, that decision was made in 2019, and 2020 doesn't need help standing out. Still, we wanted to shake things up. When Megan-Anne finished knitting that first blanket in 2014, we never imagined we'd still be making them in 2020. We are blown away by how much love and support the project has gotten and couldn't have predicted it. We want you to see [Eight Bit](#), [On Board](#), and now these socks for what they are: a love letter from us to the entire GAL community.



© *Lattes & Llamas*

All rights reserved. You may not sell, redistribute, or publish this pattern. This pattern is for personal use only. However, if you wish to sell your socks or an item made using this pattern for the benefit of Child's Play Charity, please follow the guidelines set forth by CP Charity to ensure that 100% of the proceeds go to CP Charity. If you use this color chart in one of your designs and wish to share it with others, it must be free and Lattes & Llamas must be given appropriate credit along with a link to our website and the [Child's Play Charity Widget](#).



GUSSET SET-UP

With RS facing and larger needles, and continuing with Color B, Sl 1 wyib, K across the remaining 19(21, 23, 25) sts from the HEEL TURN section. Pick up and knit 1 st in each of the 18(20, 22, 24) sl sts along the first edge of the heel flap. **PM to signify the new beginning of the rnd.**

Transfer the 32(36, 40, 44) sts from your waste yarn or stitch holder back to your needles and knit across them with color B. PM to signify the end of the top of the foot and the beginning of the bottom of the foot.

Continuing with Color B, pick up and knit 1 st in each of the 18(20, 22, 24) sl sts along the second edge of the heel flap. K to 16(17, 18, 19) sts before the new beginning of the rnd. PM to mark the end of the repeat you will work on the bottom of the foot in the GUSSET section. K to the new beginning of the rnd M. There should now be 88(98, 108, 118) total sts on the needles. **Distribute sts evenly across the needles and change to larger needles.** Continue to GUSSET section.

GUSSET

Now you will work the MASTER SWORD Chart across the top of the foot, the GUSSET 2 chart across the bottom of the foot and begin decreasing at the top of each gusset every other rnd until 24(26, 28, 30) sts are decreased and 64(72, 80, 88) sts remain on the needles.

Please note that for Sizes 1, 2, and 4, when working the gusset chart repeat section (outlined in GREEN on the chart) you will not work to the end of the outlined section on the final repeat. Instead, the second (second, --, third) time you work the repeat outlined in red to the M, you will only work the first 8(12, --, 4) sts of the repeat.

Gusset Rnds: Beginning with column 7(5, 3, 1) and row 7(5, 3, 1), work the MASTER SWORD chart through column 38(40, 42, 44), SM; beginning with row 7(5, 3, 1), work the first 18 columns of the GUSSET chart, then work the green bordered repeat

to the next M. SM and work the remaining columns of the GUSSET chart to the end of the round.

Continue as established, working the MASTER SWORD chart to the first marker, and the GUSSET chart to the end of the round until you have completed row 50 of both charts and 24(26, 28, 30) sts have been decreased. 64(72, 80, 88) sts remain. Continue to FOOT section.

FOOT

Foot Rnds: Beginning with column 7(5, 3, 1) work the DON'T GO ALONE chart to the first marker, then work the first 4 sts of the LIFE GAUGE chart, work the green bordered repeat of the LIFE GAUGE chart to 4 sts before the end of the round, then complete the last 4 sts of the chart.

When the foot measures 2(2, 2.25, 2.5) inches less than final foot length measurement (from heel to longest toe), continue to the TOE section. If you're able to try on the sock, it should reach the base of your pinkie toe.

TOE

The toe is worked with Color C and the smaller needles.

Rnd 1 (set-up): With Color C and smaller needles, K to M signifying the end of the top of the foot, SM; K to 2nd M (the M signifying the end of the repeat outlined in green on the GUSSET chart) remove M, K to end rnd.

Rnd 2: K to M, SM; K to end of rnd.

Rnd 3 (decrease): [K1, SKS, K until 3 sts before M, K2Tog, K1, SM] twice. – 4 sts decreased

There are now 60(68, 76, 84) sts on the needles.

Repeat Rnds 2-3 an additional 6(7, 8, 9) times and 36(40, 44, 48) sts remain on the needles.

Now you will begin decreasing every round. **Repeat Rnd 2 an additional five times.** 16(20, 24, 28) sts remain on the needles.

Cut the yarn leaving a 12-inch tail. Graft the remaining sts together using the Kitchener stitch.

Weave in ends and block.



Charts

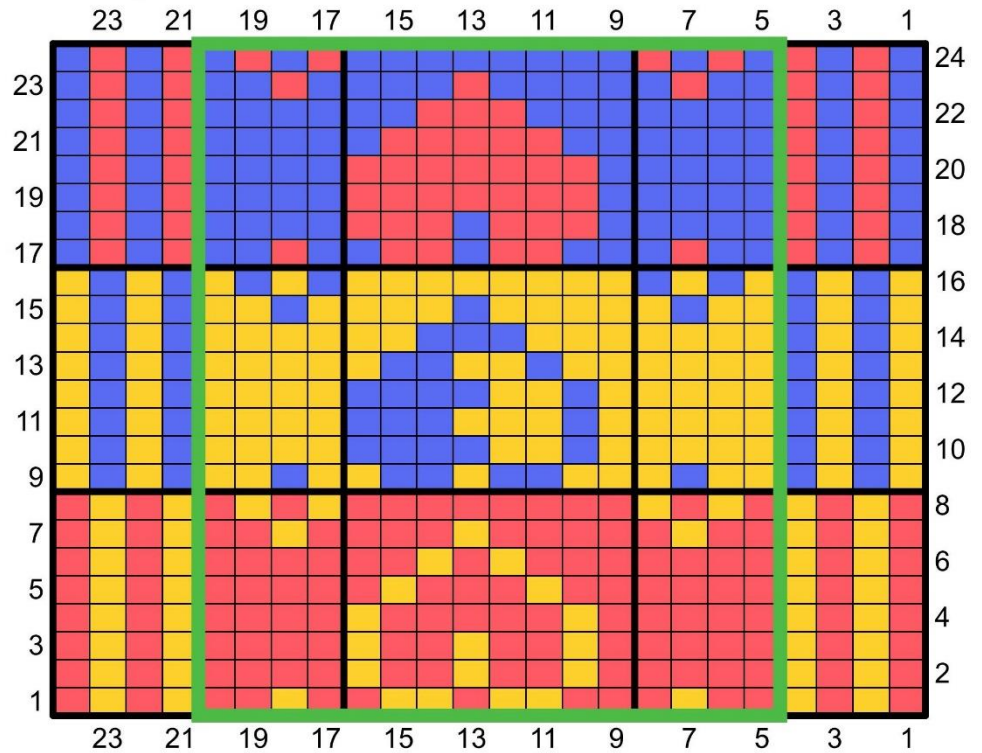
Numbers are provided on either side of the charts to help you keep your place, however charts should be worked in the round and read from right to left on every round.

CHART KEY

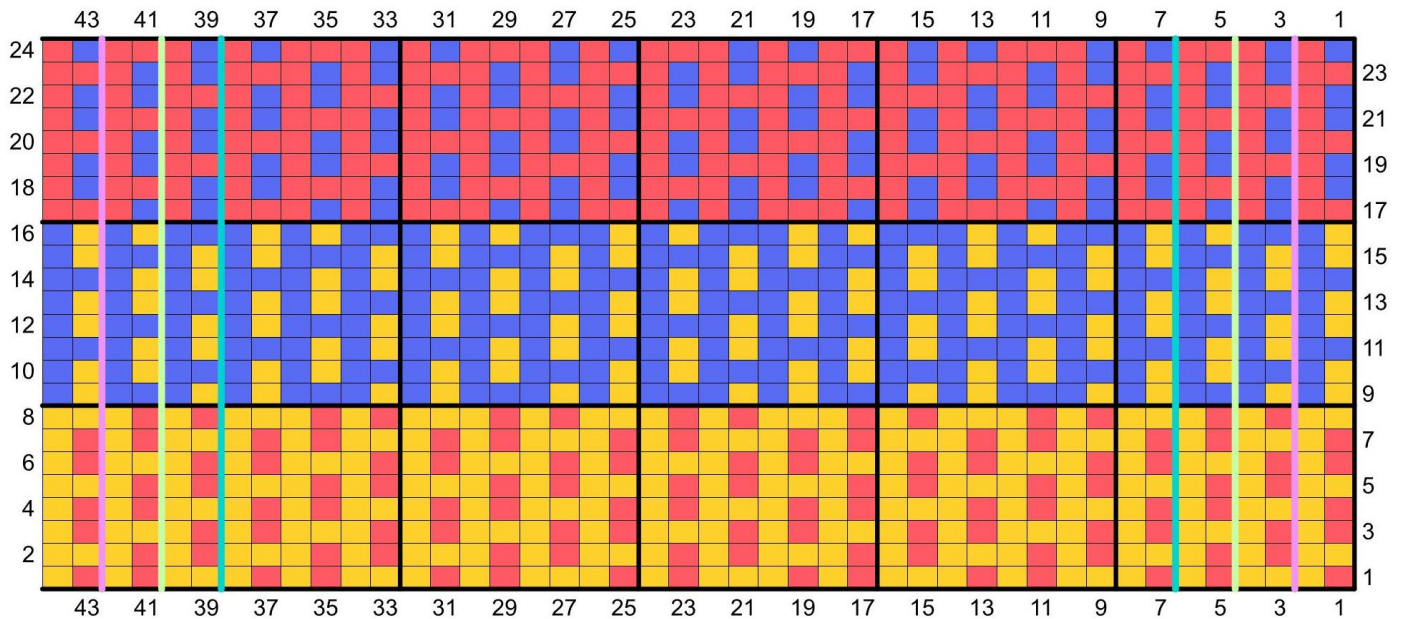
| | | | |
|----------|----------|----------|----------|
| A | B | C | D |
| | | | |
| | | | |

| | |
|--|--------|
| | Size 3 |
| | Size 2 |
| | Size 1 |

Life Gauge



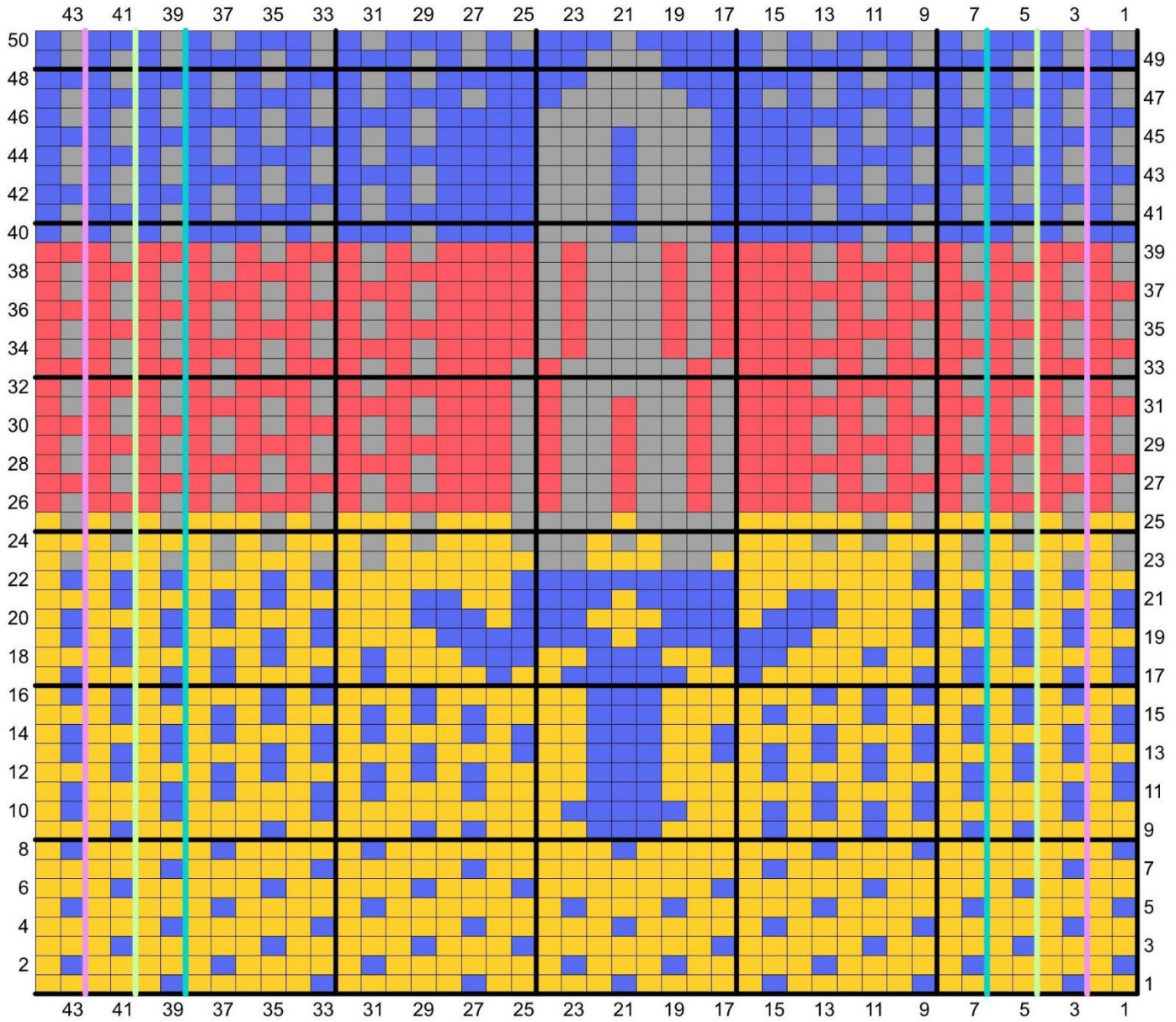
Don't Go Alone





Foot 1

Master Sword





Foot 1

Gusset 2

