

LATTES & LLAMAS PRESENTS

Legend of Zelda

THE SECOND GEEK-A-LONG SOCKS OF 2022

Lattes & Llamas

THE LEGEND OF
ZELDA

A GEEK-A-LONG SOCK

A New Clue Every Sunday
#geekalong @lattesandllamas

The Geek-A-Long (GAL) supports Child's Play Charity, which provides games and consoles to children in hospitals and domestic violence shelters. The sample socks made by Lattes & Llamas will be auctioned off at the annual Child's Play Charity gala in December. We encourage GAL participants to donate to CP Charity via our [sanctioned widget](#) in lieu of paying for this pattern. No donation is too small!



Yarn

1 Lattes & Llamas 2022 Year of the Sock Zelda Sock Kit, or a comparable fingering weight yarn in 4 colorways. It is certainly possible to work this sock in only 2 colors, but we recommend using 4.

Sample Size 4 used “Kamala Kahn” as Color A, “Gilded” as Color B, Cyborg as Color C, and Blue Ajah as Color D on Lattes & Llamas [Vacation Yarn](#) (100 grams/ 438) featured in the [“Zelda” Yarn Kit in special edition 50 gram skeins](#).

Color A: 26(28, 30, 35) grams/ 115(122, 132, 155) yards
Color B: 38(40, 42, 44) grams/ 168(175, 184, 194) yards
Color C: 26(28, 30, 35) grams/ 115(122, 132, 155) yards
Color D: 26(28, 30, 35) grams/ 115(122, 132, 155) yards



Note that yardage is estimated and may vary depending on yarn used, gauge variations, or modifications. When choosing your yarn, make sure that all 4 colors contrast sharply with each other. We recommend taking a photograph of the yarns together, and then changing it into black and white to see if the colors contrast strongly enough.



Needles

US1 / 2.25 mm and US2 / 2.75 mm circular needles to work in Magic Loop or size needed to obtain gauge.

We prefer the Magic Loop method when knitting socks. If you are more comfortable using DPNs or two circulars, this pattern is easily converted.

Notions

3 Stitch Markers; Tapestry Needle; Tape Measure; Stitch Holder or Waste Yarn

Gauge

36 sts and 40 rows = 4” in stranded colorwork, knit in the round with larger sized needles and blocked. See gauge swatch directions on page 4.

Sizing

Size 1(2, 3, 4) has a 7.11(8, 8.88, 9.7) inch foot circumference.

As with many colorwork socks, these were designed with little to no ease. Choose the size closest to your actual foot measurement. Stitch counts are written for size 1 with (2, 3, 4) size stitch counts in brackets. Sample shown is a size 4 on a man’s foot with a 9.5-inch circumference, who wears a US size 10 shoe.

Abbreviation Key

CO	cast on
K	knit
K2Tog	knit 2 sts together
M	marker
P	purl
P2Tog	purl 2 sts together
PM	place marker
rnd(s)	round(s)
RS	right side
sl	slip
st(s)	stitch(es)
SKS	Slip, Knit, Slip: sl 1, K1, pass slipped st over the K1 – 1 st decreased
SM	slip marker
wyib	with yarn in back
wyif	with yarn in front
WS	wrong side



History of the Geek-A-Long

First imagined in the Winter of 2013, the Geek-A-Long (GAL) was born from unrestrained idealism and way too much coffee. The idea was ridiculous: Release a new pattern every week all year, based on pop-culture nerdiness. At the end of the year, we would join 48 double-sided squares together to make a massive blanket. Our Fandom Opus would be sent to the Child's Play Charity Dinner Auction in Seattle, and the proceeds of the sale would go towards providing video games and other entertainment to children in hospitals and domestic violence shelters.

When Megan-Anne cast on that first square, she had no idea what the GAL would turn into. Seven years, seven blankets, and nearly 300 squares later, the Geek-A-Long has grown far beyond us. The community has grown each year and based on our square download statistics there are GAL knitters in every corner of the world. Your generosity is astounding. The GAL community has raised over \$10,000 for Child's play with individual donations and proceeds raised from the sale of the auctioned blankets.

We wanted to do something to make 2020 memorable. Admittedly, that decision was made in 2019, and 2020 doesn't need help standing out. Still, we wanted to shake things up. When Megan-Anne finished knitting that first blanket in 2014, we never imagined we'd still be making them in 2020. We are blown away by how much love and support the project has gotten and couldn't have predicted it. We want you to see [Eight Bit](#), [On Board](#), and now these socks for what they are: a love letter from us to the entire GAL community.



© *Lattes & Llamas*

All rights reserved. You may not sell, redistribute, or publish this pattern. This pattern is for personal use only. However, if you wish to sell your socks or an item made using this pattern for the benefit of Child's Play Charity, please follow the guidelines set forth by CP Charity to ensure that 100% of the proceeds go to CP Charity. If you use this color chart in one of your designs and wish to share it with others, it must be free and Lattes & Llamas must be given appropriate credit along with a link to our website and the [Child's Play Charity Widget](#).

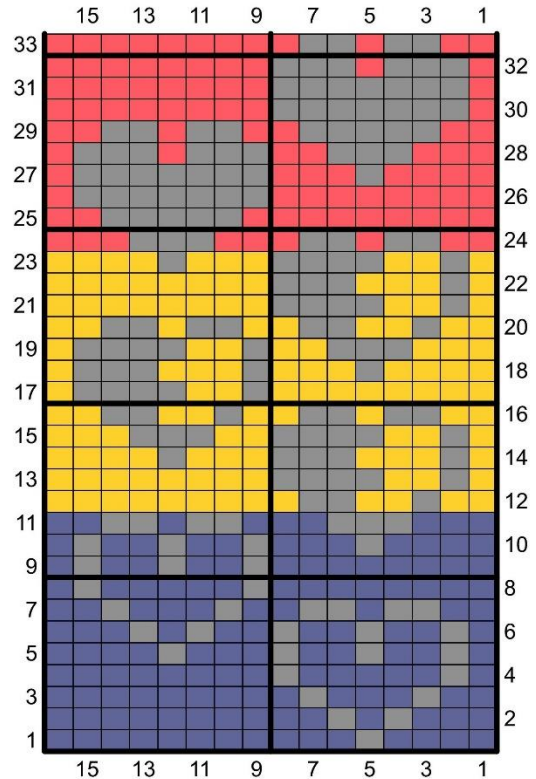


Gauge Swatch

This is a functional gauge swatch, which means that not only will you be able to accurately assess your gauge while being certain that the colorways contrast strongly enough, but you will walk away with a cute and reusable coffee cup sleeve. They are small enough to keep tucked in your bag or the center console of your car to use instead of the cardboard ones many coffee shops offer.



Life Gauge (swatch)



Coffee Cozy

RIBBING

With larger needles and Color C, CO 80 sts using your favorite stretchy CO. Distribute stitches evenly across needles and join to work in the round, careful not to twist the sts. PM to mark beginning of the rnd.

Rnds 1-4: [K1, P1] around.

Rnd 5: K.

Continue to COLORWORK section.

COLORWORK

Always read the chart from right to left. When working the chart, catch floats longer than five stitches.

Rnds 1-33: Join Color D. Work LIFE GAUGE Chart five times around. Break D after round 11 and

join B. Break B after round 23 and join A. Break A after round 33.

With color C, Knit 1 rnd. Repeat Rnds 1-4 from the RIBBING section. Bind off loosely, using your favorite stretchy BO.

FINISHING

Weave in ends and block. After it is dry, check your gauge. If you have not already done so, now is a wonderful time to take a photograph of your swatch and change it to black and white to be certain that the contrast is strong enough so that the colorwork will not be muddled. The Legend of Zelda pattern can tolerate a slightly more relaxed contrast than some other patterns, and we opted for a muted primary palate, but you should ensure you have enough contrast to see the pattern when any 2 of your 4 colors are combined.