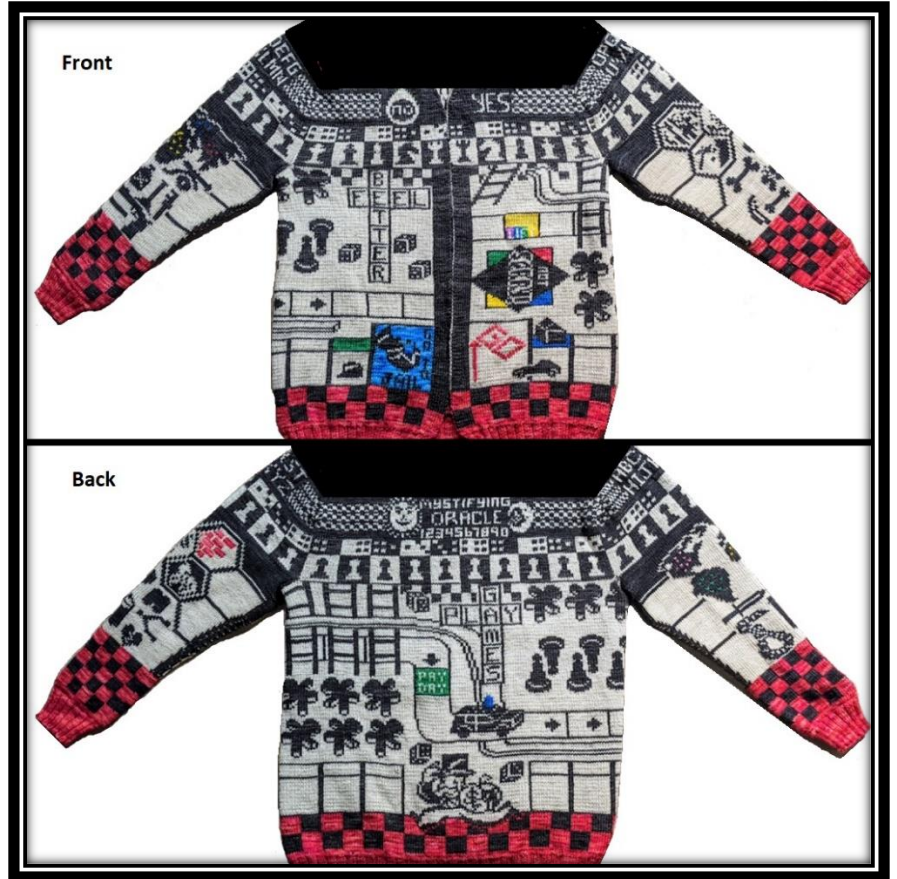




Clue 22: Yoke



s

Child's Play Charity

The Geek-A-Long (GAL) supports Child's Play Charity, which provides games and consoles to children in hospitals and domestic violence shelters. The sample blanket and/or sweater made by Lattes & Llamas is auctioned off at the annual Child's Play Charity gala in December each year. Additionally, GAL participants donate to CP Charity throughout the year via our [sanctioned widget](#). There is no required donation, but we encourage you to donate a few dollars in lieu of paying for this pattern. No donation is too small!

© Lattes & Llamas

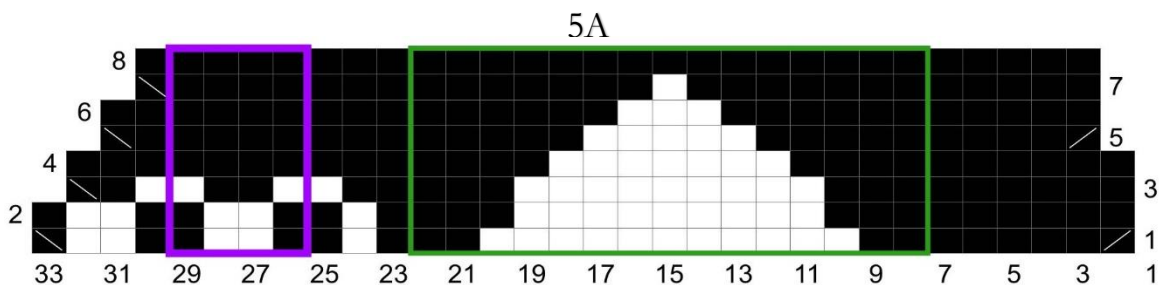
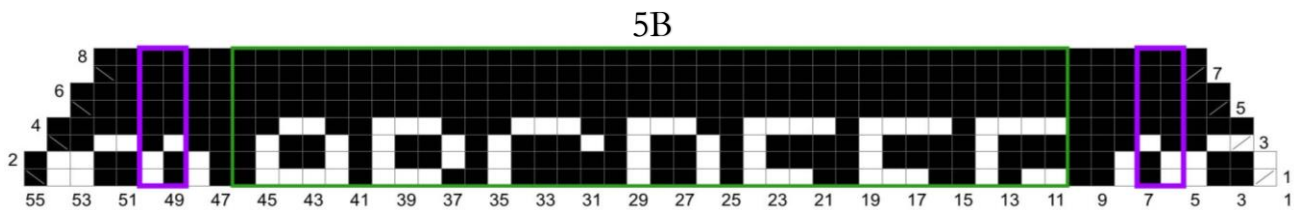
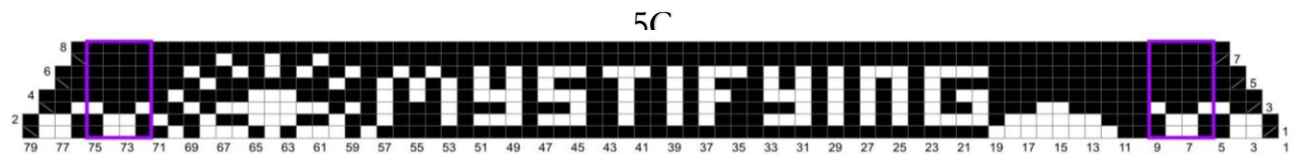
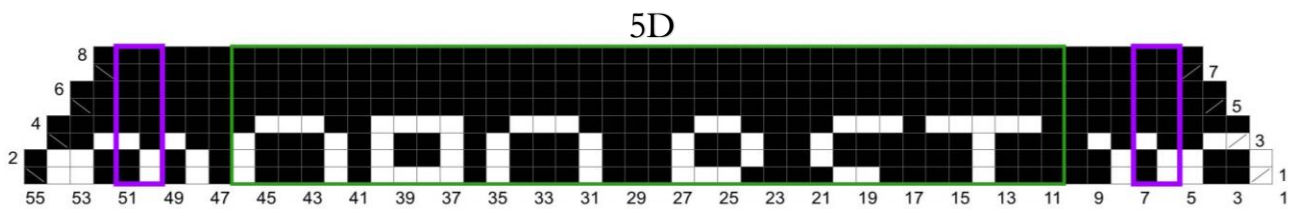
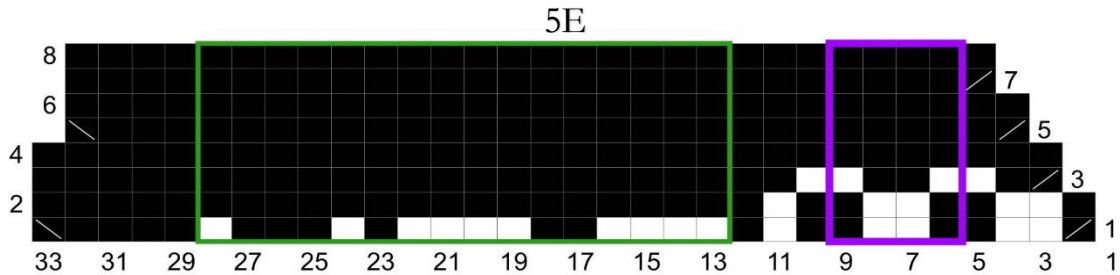
All rights reserved. You may not sell, redistribute, or publish this pattern. This pattern is for personal use only. However, if you wish to sell your Geek-A-Long Sweater or an item made using this pattern for the benefit of Child's Play Charity, please follow the guidelines set forth by CP Charity to ensure that 100% of the proceeds go to CP Charity. If you use one of the color charts featured on this sweater in one of your designs and wish to share it with others, it must be free and Lattes & Llamas must be given appropriate credit along with a link to our website and the [Child's Play Charity Widget](#).





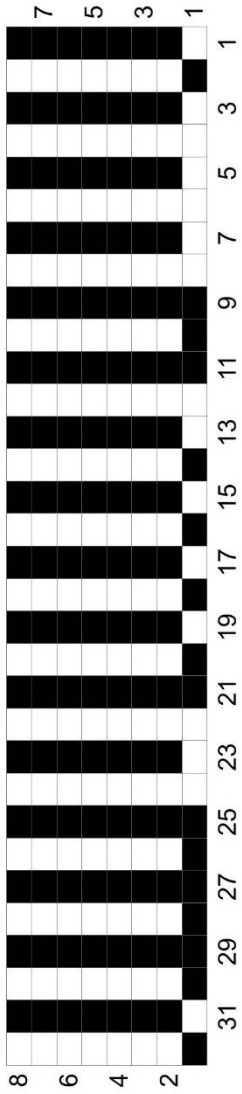
On Board Sweater: Clue 22

Next 8 rows: Work charts 5A-5E as established previous section, repeating the purple repeats between markers, (noting that for size 1 ONLY the purple repeats are not worked at all on chart 4C) working from A-E on right side rows, and E-A on wrong side rows. Do **not** remove markers after completing this section. **Note that rows 1, 3, 5, & 7 are decrease rows.** See project sheet for instructions on working double knitting decreases.

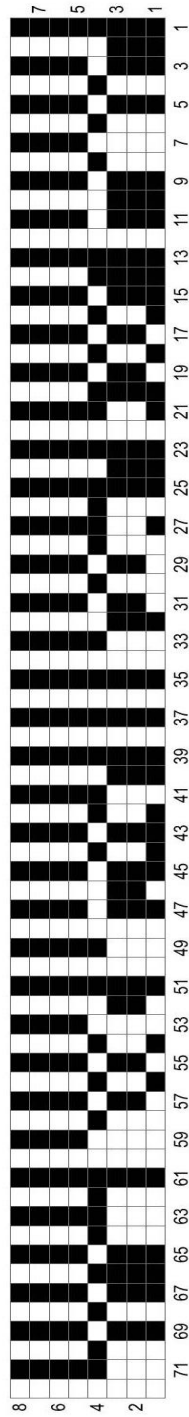




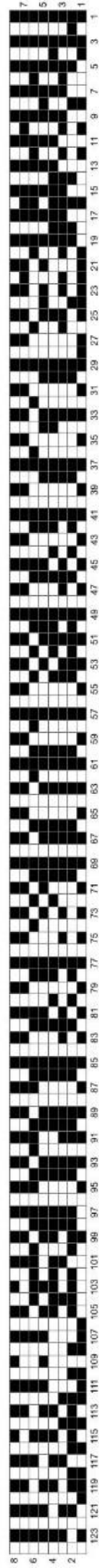
E: Extreme



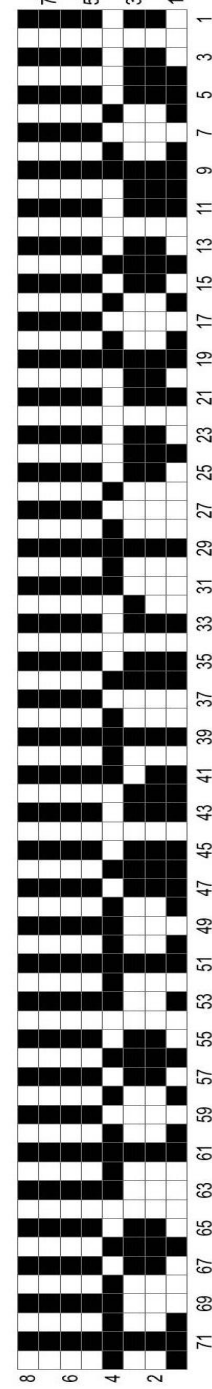
D Extreme



C: Extreme



B: Extreme



A: Extreme

