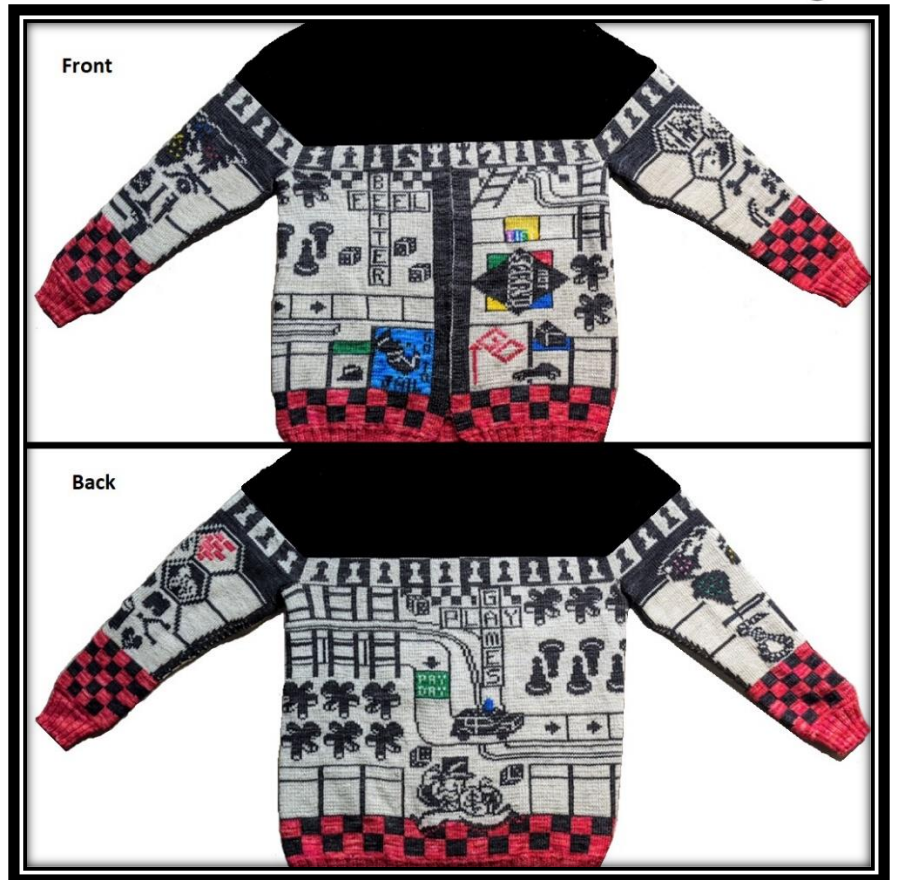




# Clue 18: Yoke



## Child's Play Charity

The Geek-A-Long (GAL) supports Child's Play Charity, which provides games and consoles to children in hospitals and domestic violence shelters. The sample blanket and/or sweater made by Lattes & Llamas is auctioned off at the annual Child's Play Charity gala in December each year. Additionally, GAL participants donate to CP Charity throughout the year via our [sanctioned widget](#). There is no required donation, but we encourage you to donate a few dollars in lieu of paying for this pattern. No donation is too small!

## © Lattes & Llamas

All rights reserved. You may not sell, redistribute, or publish this pattern. This pattern is for personal use only. However, if you wish to sell your Geek-A-Long Sweater or an item made using this pattern for the benefit of Child's Play Charity, please follow the guidelines set forth by CP Charity to ensure that 100% of the proceeds go to CP Charity. If you use one of the color charts featured on this sweater in one of your designs and wish to share it with others, it must be free and Lattes & Llamas must be given appropriate credit along with a link to our website and the [Child's Play Charity Widget](#).





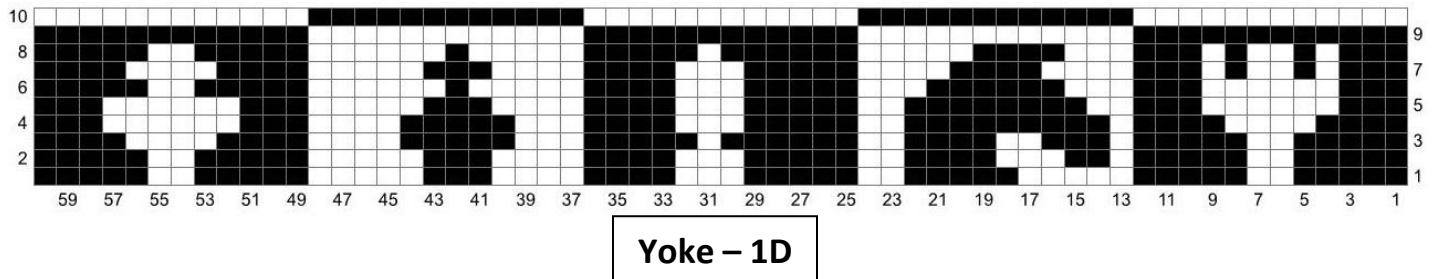
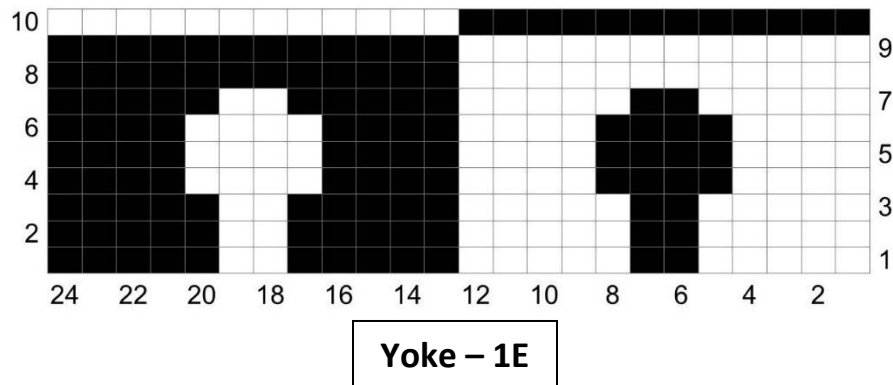
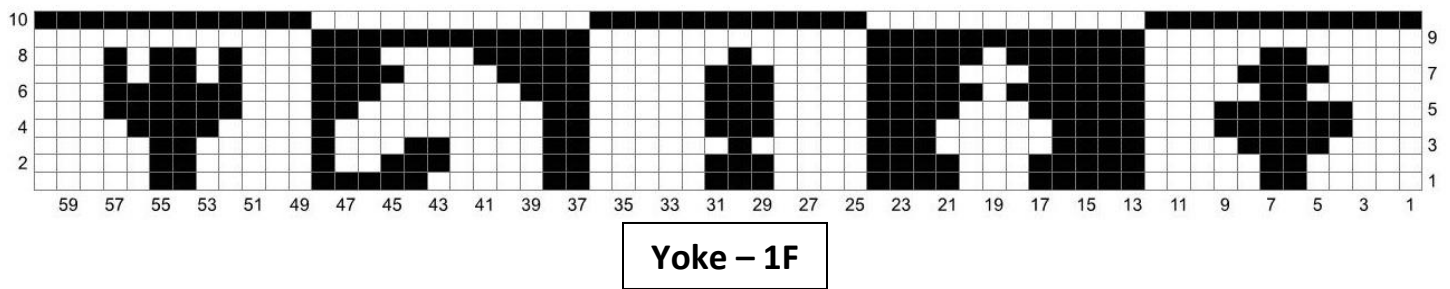
# On Board Sweater; Clue 18

Now that the sleeves are joined you will complete the chess squares and close the underarm seams. You can wait to close the seams if you want, but I recommend doing it now. You will likely want to try on your sweater as you work the yoke, and that's much easier with the underarms closed.

**Right side rows:** Work chart 1D to M, chart 1E to 2<sup>nd</sup> M, and 1F to end.

**Wrong side rows:** Work chart 1F to M, 1E to 2<sup>nd</sup> M, and 1D to end.

**Remove markers as you come to them on the final row of the chart.**





You will need 3 Double Pointed Needles (DPNs) to close the underarm seams. You will close each seam on the right and wrong sides separately.

1. Beginning with the underarm sts from the body, carefully insert the first DPN through only the right side sts (do not remove waste yarn yet!). Then, insert a second DPN through only the wrong side sts. **See photo below for reference.**
2. Remove the waste yarn, leaving the sts on the 2 DPNs. With a tapestry needle and waste yarn, transfer the sts on the back needle (the WS sts) to the waste yarn, leaving only the right side sts on a DPN.
3. Repeat steps 1-2 with the underarm sts from the sleeve. After doing so, you will have 2 DPNs with just the RS underarm sts on them. Using a tapestry needle and CC, graft the RS underarm closed using the kitchener stitch.
4. Turn sweater over, and transfer the WS sts to DPNs. Using MC, graft the WS underarm closed using the kitchener st.
5. Repeat steps 1-4 on the second underarm.

