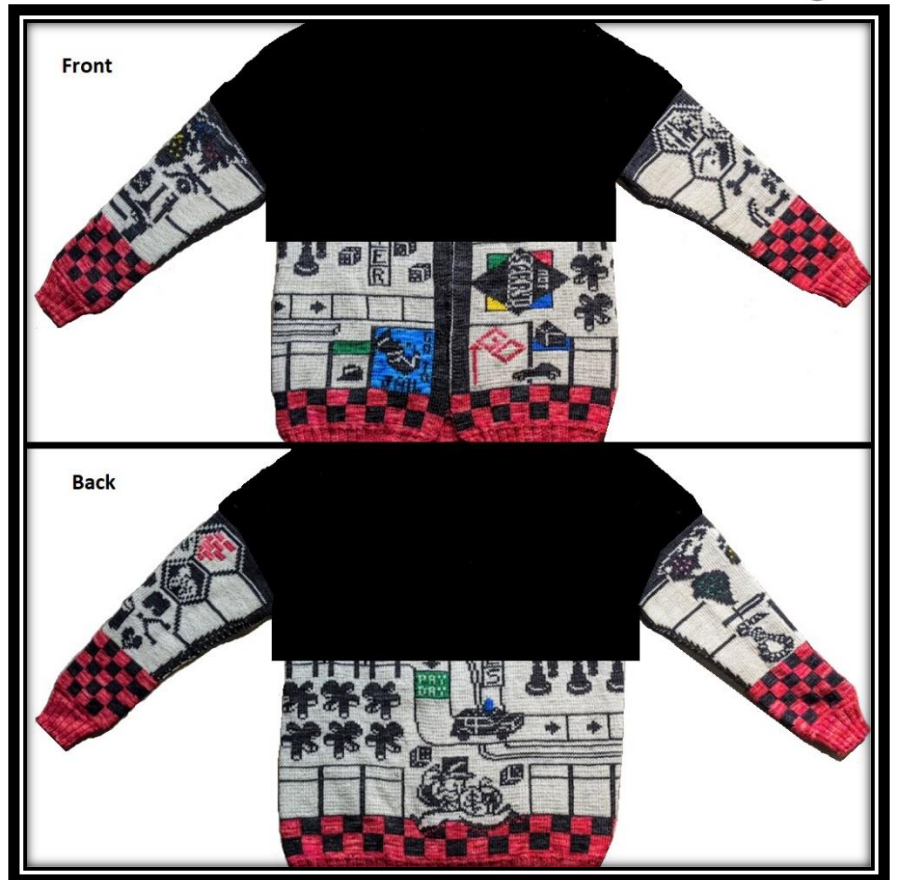




Clue 13: Body



Child's Play Charity

The Geek-A-Long (GAL) supports Child's Play Charity, which provides games and consoles to children in hospitals and domestic violence shelters. The sample blanket and/or sweater made by Lattes & Llamas is auctioned off at the annual Child's Play Charity gala in December each year. Additionally, GAL participants donate to CP Charity throughout the year via our [sanctioned widget](#). There is no required donation, but we encourage you to donate a few dollars in lieu of paying for this pattern. No donation is too small!

© Lattes & Llamas

All rights reserved. You may not sell, redistribute, or publish this pattern. This pattern is for personal use only. However, if you wish to sell your Geek-A-Long Sweater or an item made using this pattern for the benefit of Child's Play Charity, please follow the guidelines set forth by CP Charity to ensure that 100% of the proceeds go to CP Charity. If you use one of the color charts featured on this sweater in one of your designs and wish to share it with others, it must be free and Lattes & Llamas must be given appropriate credit along with a link to our website and the [Child's Play Charity Widget](#).





On Board Sweater; Clue 13

Clues 8-16 will each be made up of 3 charts: A, B, and C. On Right Side rows you will work the charts in the order A-B-C, reading the charts from right to left. On Wrong Side rows you will work the charts in the order C-B-A, reading the charts from left to right. Before beginning these charts, double check your marker placement, as they will make your progress through the charts MUCH easier. Note that you may opt to add additional markers to indicate each of the 16 st repeats that will be used in charts A and C throughout the body. For all body sections before the sleeve join you will work as follows:

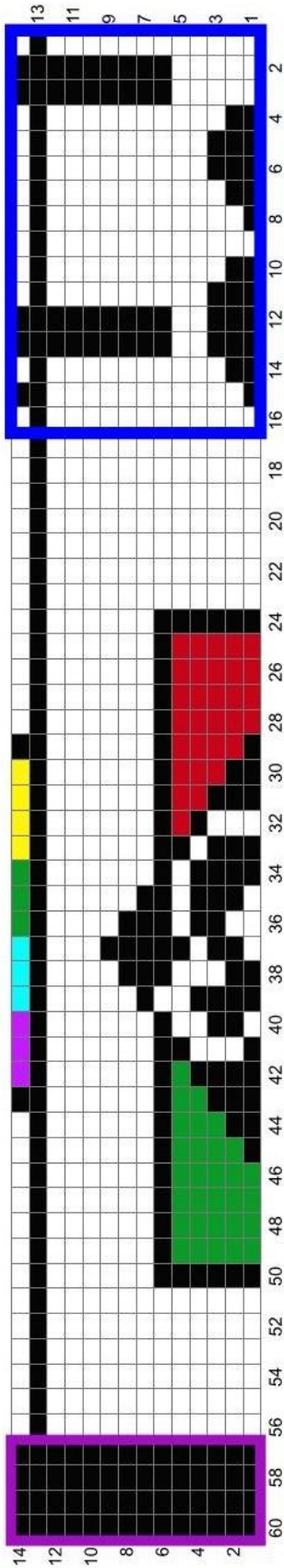
1. A 4 st repeat to marker 1.
2. A 40 st chart to marker 2.
3. A 16 st repeat to marker 3. *Additional markers can be added here to mark off each of the 16 st repeats.*
4. A 48 st chart to marker 4.
5. A 16 st repeat to marker 5. *Additional markers can be added here to mark off each of the 16 st repeats.*
6. A 40 st chart to marker 6.
7. A 4 st repeat to end.

Right Side rows (reading charts from right to left):

- **Chart A:**
 - o Work the purple bordered repeat to the 1st marker. *4(8, 8, 12, 8) 12(8, 12, 8, 12) 8(12, 8, 12, 8) sts.*
 - o Work sts 5-44 (the sts before the blue border) to the 2nd marker. *40 sts.*
 - o Work the blue bordered repeat to the 3rd marker. *16(16, 32, 32, 48) 48(64, 64, 80, 80) 96(96, 112, 112, 128) sts.*
- **Chart B:**
 - o Work full chart to the 4th marker. *48 sts.*
- **Chart C:**
 - o Work the blue bordered repeat to the 5th marker. *16(16, 32, 32, 48) 48(64, 64, 80, 80) 96(96, 112, 112, 128) sts.*
 - o Work sts 17-56 (the sts before the purple border) to the 6th marker. *40 sts.*
 - o Work the purple bordered repeat to end. *4(8, 8, 12, 8) 12(8, 12, 8, 12) 8(12, 8, 12, 8) sts.*

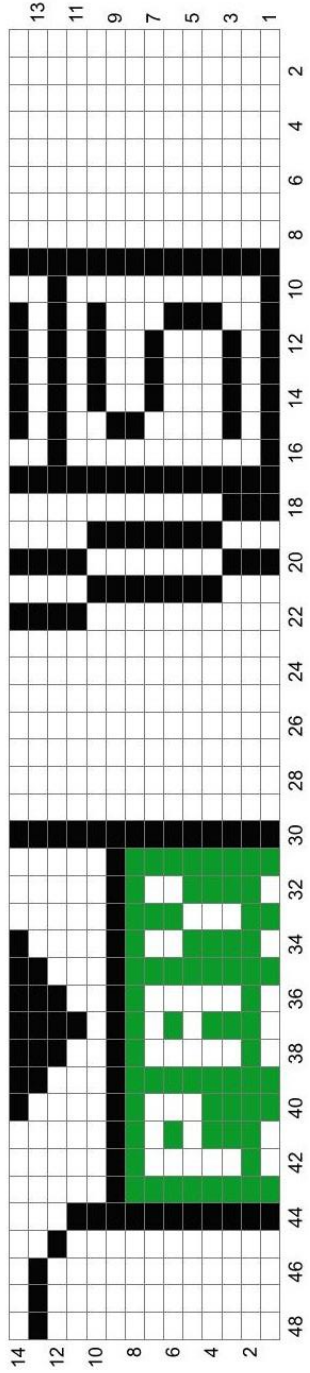
Wrong Side rows (reading charts from left to right):

- **Chart C:**
 - o Work the purple bordered repeat to the 1st marker. *4(8, 8, 12, 8) 12(8, 12, 8, 12) 8(12, 8, 12, 8) sts.*
 - o Work sts 56-17 (the sts before the blue border) to the 2nd marker. *40 sts.*
 - o Work the blue bordered repeat to the 3rd marker. *16(16, 32, 32, 48) 48(64, 64, 80, 80) 96(96, 112, 112, 128) sts.*
- **Chart B:**
 - o Work full chart to the 4th marker. *48 sts.*
- **Chart A:**
 - o Work the blue bordered repeat to the 5th marker. *16(16, 32, 32, 48) 48(64, 64, 80, 80) 96(96, 112, 112, 128) sts.*
 - o Work sts 44-5 (the sts before the purple border) to the 6th marker. *40 sts.*
 - o Work the purple bordered repeat to end. *4(8, 8, 12, 8) 12(8, 12, 8, 12) 8(12, 8, 12, 8) sts.*

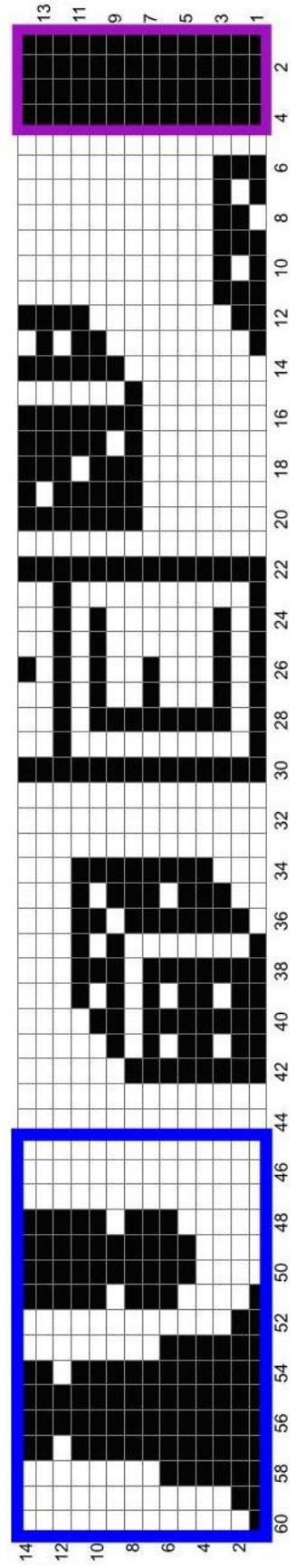


Body Chart 7C

For this section, I worked the letter "E" in duplicate stitch so it would read correctly on both sides. I worked the colored portions of charts B & C in duplicate as well. However, I recommend finishing the next body section (8) before working the duplicate stitching on the top row of Chart C.



Body Chart 7B



Body Chart 7A