



LATTES & LLAMAS

ON BOARD

A GEEK-A-LONG SWEATER

STARTING JUNE 20, 2021

#GEEKALONG @LATTESANDLLAMAS

**Release Schedule:**

[5/30 – Project Sheet and FAQ](#)

[6/6 – Practice Swatch 1](#)

[6/13 – Practice Swatch 2](#)

June 20 & 27 – Clues 1-2

July – Clues 3, 4, 5, & 6

August – Clues 7, 8, 9, 10, & 11

September – Clues 12, 13, 14 & 15

October – Clues 16, 17, 18, 19 & 20

November – Clues 21, 22, 23 & 24



## Practice Swatch 2: Railroad

### A quick double knitting refresher

Both yarns are carried across each row. When double knitting you will work 2 sts for each square on the chart: A knit followed by a purl. The colors reverse on the wrong side (when working flat. When working in the round you do not need to reverse the colors on the wrong side because you won't be working with the wrong side facing you). If you work CC for the background and MC for the foreground on the right side, work MC for the background and CC for the foreground on the wrong side when working flat.

**ALWAYS** bring both colors forward before purling, and both colors to the back before knitting.

**On the RS:** Read the chart from Right to Left. When working in the round you will read every row of the chart from Right to Left.

**On the WS:** Read the chart from left to right.

**ALWAYS** purl with the color you did not knit with (so if the chart indicates that you should K with MC you will purl with CC).

**Relax**, have fun, and remind yourself that while double knitting may look complex when complete, it is really just glorified K1P1 ribbing. You've got this.

### Helpful Links:

- [The 2021 Geek-A-Long FAQ](#)
- [Geek-A-Long Community on Ravelry](#)
- [How To Cast On for Double Knitting](#)
- [Double Knitting Basics](#)
- [How to Bind Off Double Knitting](#)
- [M1 Increase for Double Knitting](#)
- [KFB Increase for Double Knitting](#)
- [Cable Decrease for Double Knitting](#)
- [K2tog Decrease for Double Knitting](#)





# Instructions

**Note:** There are 2 basic techniques for working double knitting increases and decreases. This swatch was designed to let you try out both techniques for increasing and both techniques for decreasing. Video tutorials are available for each one (see links above). The On Board sweater will call for the KFB increase and the Cable Decrease, however you may swap those for the M1 Increase or K2tog Decrease if you prefer. I recommend trying out all 4 and choosing the method of increasing and decreasing that feels most comfortable for you when working the sweater.

**Cast On:** With MC (white on my sample) and CC (black on my sample), cast on 23 sts for double knitting. *A note to newer double knitters: This really means to cast on 46 total sts. Each double knitting stitch is made up of 2 parts – a knit followed by a purl. When casting on, you must cast on 2 sts for each stitch on the chart.*

**Chart:** Work the Railroad chart for 48 rows. Odd rows are Right Side rows and should be read from right to left. Even rows are Wrong Side rows and should be read from left to right.

**Edging:** The edging will be worked by first picking up sts along each edge with MC, then joining to work in the round. You will pick up a total of 32 sts along the left and right edges. In step 2 below you will be instructed to pick up 16 sts, then place a marker and pick up 16 more. Make sure that as you pick up and knit sts along the edge that 16 sts brings you to the middle of the edge. You'll be picking up 2 sts for every 3 rows along those edges.

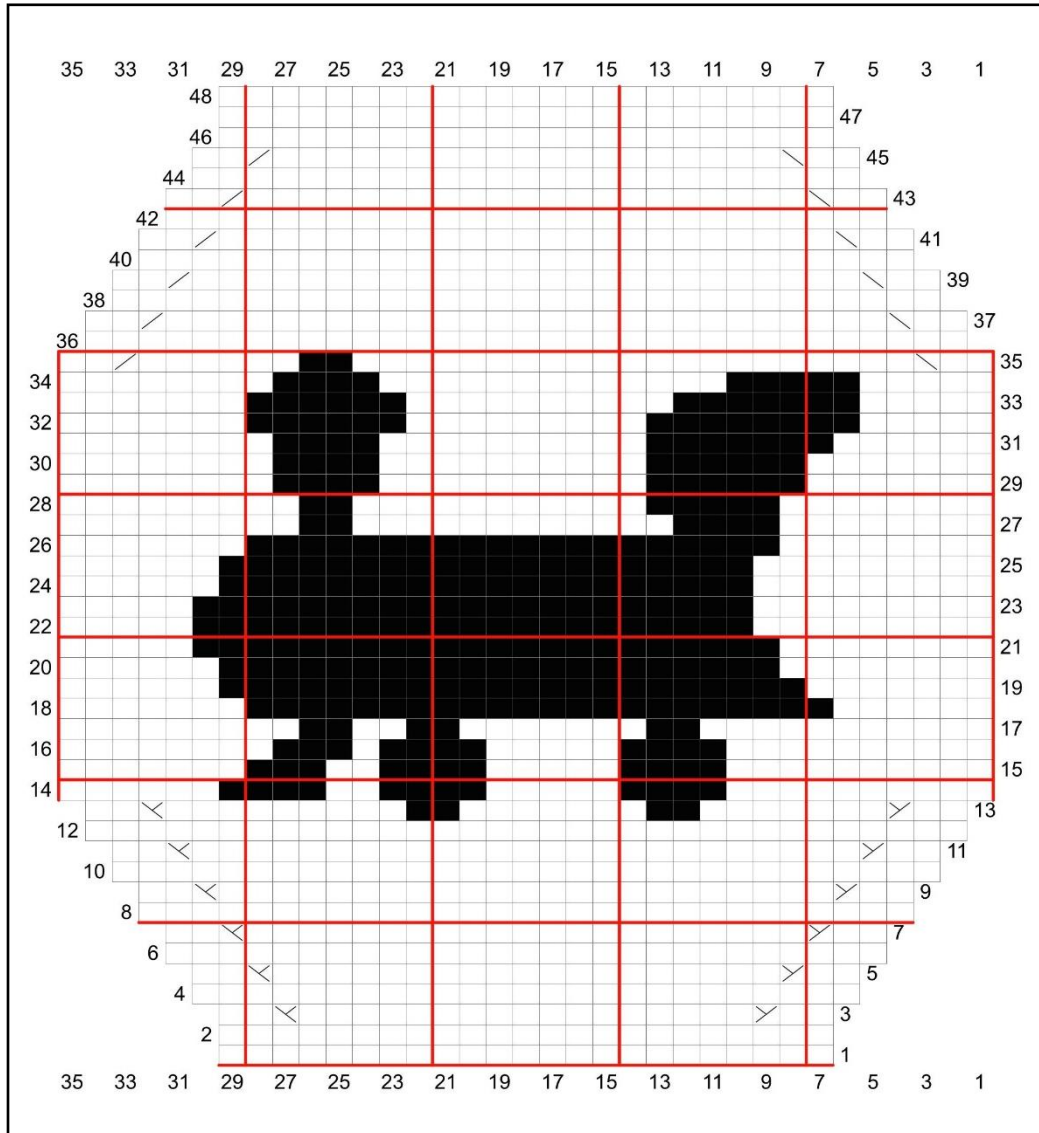
1. After completing row 48 of the Railroad Chart, break CC. With MC, work K2tog decreases across the row (knitting each knit together with it's adjacent purl). 23 sts. Place marker.
2. Pick up and knit 16 sts along the left edge. Place marker. Pick up and knit 16 sts along the remainder of the edge. Place marker.
3. Pick up and knit 23 sts along the cast on edge of the piece. Place marker.
4. Pick up and knit 16 sts along the right edge. Place marker. Pick up and knit 16 sts along the remainder of the right edge. Place marker and join to work in the round. Break MC, and join cc2 (red on my sample).
5. Purl all sts around, slipping markers when you come to them.
6. K1, M1 (make 1). \*K to 1 st before the next marker. M1, K1, slip marker, K1, M1. Repeat around from \* until you reach the last marker.
7. Purl all sts around, slipping markers when you come to them.


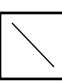
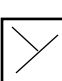
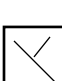
Repeat 6-7 twice more. Bind off.





# Railroad Chart



-  Cable Decrease
-  K2tog Decrease
-  M1 Increase
-  KFB Increase

## Child's Play Charity

The Geek-A-Long (GAL) supports Child's Play Charity, which provides games and consoles to children in hospitals and domestic violence shelters. The sample blanket and/or sweater made by Lattes & Llamas is auctioned off at the annual Child's Play Charity gala in December each year. Additionally, GAL participants donate to CP Charity throughout the year via our [sanctioned widget](#). There is no required donation, but we encourage you to donate a few dollars in lieu of paying for this pattern. No donation is too small!

## © Lattes & Llamas

All rights reserved. You may not sell, redistribute, or publish this pattern. This pattern is for personal use only. However, if you wish to sell your Geek-A-Long Sweater or an item made using this pattern for the benefit of Child's Play Charity, please follow the guidelines set forth by CP Charity to ensure that 100% of the proceeds go to CP Charity. If you use one of the color charts featured on this sweater in one of your designs and wish to share it with others, it must be free and Lattes & Llamas must be given appropriate credit along with a link to our website and the [Child's Play Charity Widget](#).