



LATTES & LLAMAS

ON BOARD

A GEEK-A-LONG SWEATER

STARTING JUNE 20, 2021

#GEEKALONG @LATTESANDLLAMAS

**Release Schedule:**

*5/30 – Project Sheet and FAQ*

*6/6 – Practice Swatch 1*

6/13 – Practice Swatch 2

June 20 & 27 – Clues 1-2

July – Clues 3, 4, 5, & 6

August – Clues 7, 8, 9, 10, & 11

September – Clues 12, 13, 14 & 15

October – Clues 16, 17, 18, 19 & 20

November – Clues 21, 22, 23 & 24



# Practice Swatch 1: Electric Company

## A quick double knitting refresher

Both yarns are carried across each row. When double knitting you will work 2 sts for each square on the chart: A knit followed by a purl. The colors reverse on the wrong side (when working flat. When working in the round you do not need to reverse the colors on the wrong side because you won't be working with the wrong side facing you). If you work CC for the background and MC for the foreground on the right side, work MC for the background and CC for the foreground on the wrong side when working flat.

**ALWAYS** bring both colors forward before purling, and both colors to the back before knitting.

**On the RS:** Read the chart from Right to Left. When working in the round you will read every row of the chart from Right to Left.

**On the WS:** Read the chart from left to right.

**ALWAYS** purl with the color you did not knit with (so if the chart indicates that you should K with MC you will purl with CC).

**Relax**, have fun, and remind yourself that while double knitting may look complex when complete, it is really just glorified K1P1 ribbing. You've got this.

## Helpful Links:

- [The 2021 Geek-A-Long FAQ](#)
- [Geek-A-Long Community on Ravelry](#) --the best place to start for Geek-A-Long help, support, and camaraderie!
- Video Tutorial: [How To Cast On for Double Knitting](#)
- Video Tutorial: [Double Knitting Basics](#)
- Video Tutorial: [How to Bind Off Double Knitting](#)





# Instructions

With MC (white on my sample) and CC (black on my sample), cast on 31 sts for double knitting. *A note to never double knitters: This really means to cast on 62 total sts. Each double knitting stitch is made up of 2 parts – a knit followed by a purl. When casting on, you must cast on 2 sts for each stitch on the chart.*

Work the Electric Company chart for 44 rows. Odd rows are Right Side rows and should be read from right to left. Even rows are Wrong Side rows and should be read from left to right. At the end of row 44, cast off all stitches.

**Note: if you would like to work the log cabin edging shown in the sample photo, you should cut MC, bind off with CC, and do not cut CC when you reach the last stitch. Instead, leave it on your needle and proceed to the edging instructions.**

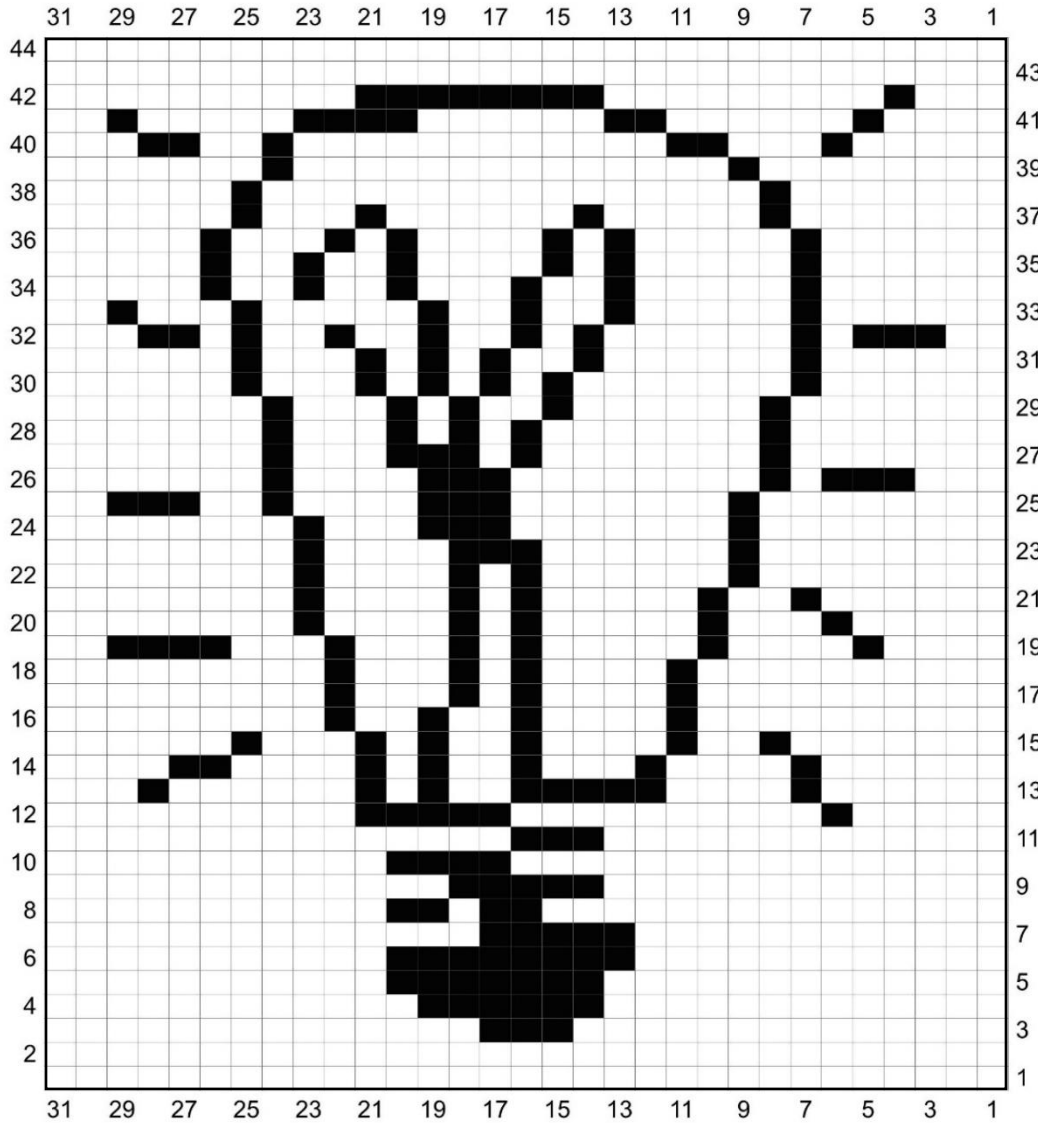
Edging: The edging for my swatch was worked in log cabin stitching. You can work any edging you want, but this one worked well for my intended use of this swatch: a pot holder/trivet.

1. With CC, pick up and knit 31 sts along the left edge of the square. Here, you will want to pick up and knit 2 sts for every 3 edge stitches (so, pick up and knit the first edge stitch, then the second edge stitch, then skip over the 3<sup>rd</sup>, and repeat down the edge). 32sts – note: the extra stitch here is the one that was on your needle when you started picking up sts.
2. Turn, and K to the last 2 sts. K2tog. 31sts.
3. K 2 more rows.
4. Using a K2tog bind off, BO all sts until only 1 stitch remains on your needles.
5. Pick up and knit 2 sts from the garter ride edge. Then pick up and knit 31 sts along the bottom of the square. 34sts.
6. Turn, and K to the last 2 sts. K2tog. 33sts.
7. K 2 more rows.
8. Using a K2tog bind off, BO all sts until only 1 stitch remains on your needles.
9. Pick up and knit 2 sts from the garter ride edge. Then pick up and knit 31 sts along the right edge of the square. 34sts.
10. Turn, and K to the last 2 sts. K2tog. 33sts.
11. K 2 more rows.
12. Using a K2tog bind off, BO all sts until only 1 stitch remains on your needles.
13. Pick up and knit 2 sts from the garter ride edge. Then pick up and knit 31 sts along the top of the square, then 2 sts along the garter ridge edge. 36sts.
14. Turn, and K to the last 2 sts. K2tog. 35sts.
15. K 2 more rows.
16. Using a K2tog bind off, BO all sts until only 1 stitch remains on your needles. Break yarn.
17. Repeat this process with an additional color if desired. When working this second color, you will pick up and work 35 sts along each edge rather than 31.





# Electric Company Chart



## Child's Play Charity

The Geek-A-Long (GAL) supports Child's Play Charity, which provides games and consoles to children in hospitals and domestic violence shelters. The sample blanket and/or sweater made by Lattes & Llamas is auctioned off at the annual Child's Play Charity gala in December each year. Additionally, GAL participants donate to CP Charity throughout the year via our [sanctioned widget](#). There is no required donation, but we encourage you to donate a few dollars in lieu of paying for this pattern. No donation is too small!

## © Lattes & Llamas

All rights reserved. You may not sell, redistribute, or publish this pattern. This pattern is for personal use only. However, if you wish to sell your Geek-A-Long Sweater or an item made using this pattern for the benefit of Child's Play Charity, please follow the guidelines set forth by CP Charity to ensure that 100% of the proceeds go to CP Charity. If you use one of the color charts featured on this sweater in one of your designs and wish to share it with others, it must be free and Lattes & Llamas must be given appropriate credit along with a link to our website and the [Child's Play Charity Widget](#).