



LATTES & LLAMAS

ON BOARD

A GEEK-A-LONG SWEATER

STARTING JUNE 20, 2021

#GEEKALONG @LATTESANDLLAMAS

**Release Schedule:**

5/30 – Project Sheet and FAQ

6/6 – Practice Swatch 1

6/13 – Practice Swatch 2

June 20 & 27 – Clues 1-2

July – Clues 3, 4, 5, & 6

August – Clues 7, 8, 9, 10, & 11

September – Clues 12, 13, 14 & 15

October – Clues 16, 17, 18, 19 & 20

November – Clues 21, 22, 23 & 24



# Planning your project

The 2021 Geek-A-Long sweater has been years in the making! I have 24 amazing weeks of double-knit goodness in store, but more than any other Geek-A-Long project this one will take some planning before you get started. The first step is to read the [2021 Geek-A-Long FAQ](#) on Lattes and Llamas. The information below will help you gather up the materials needed to cast on when the first clue drops on June 20<sup>th</sup>!

## Yarn Requirements

Details about color choices are in the FAQ, but it is strongly recommended that you choose 3 solid colors with extremely strong contrast. I used white (main color), black (contrast color 1) and red (contrast color 2). Optional embellishments are added using duplicate stitch after knitting is complete and used 10g or less each of pink, blue, green, yellow, and purple. The yarn needed for both practice swatches **IS** included in the yardage listed below.

**Recommended Yarn:** Lattes & Llamas [Geek-A-Long Yarn](#) (100 grams/ 328 yards). Sample is knit with Baskerville (Cream) as MC, Palpatine (Black) as CC1, and Burning Love (red) as CC2.

Size	MC (White)		CC1 (black)		CC2 (red)	
	grams	yards	grams	yards	grams	yards
1	300	984	330	1082	95	312
2	330	1082	365	1197	105	344
3	360	1181	405	1328	120	394
4	415	1361	450	1476	130	426
5	450	1476	500	1640	145	476
6	495	1624	560	1837	160	525
7	550	1804	620	2034	180	590
8	605	1984	685	2247	200	656
9	665	2181	750	2460	220	722
10	730	2394	825	2706	240	787
11	800	2624	910	2985	265	869
12	880	2886	1000	3280	290	951
13	965	3165	1100	3608	320	1050
14	1060	3477	1210	3969	350	1148
15	1165	3821	1330	4362	385	1263

## Tools

**Notes:** The 60” needles listed below are optional but recommended. Even on smaller sizes, there are a lot of stitches on your needles once you start the yoke, and the longer needles make working those rows much more comfortable. Sleeves will be worked in the round and can be worked in magic loop on (recommended) or on DPNs. If you prefer to work your sleeves on DPNs you will need DPNs in both US3 and 4.

### Needles

- US4 / 3.5 mm 40” -and- 60” circular needles
- US3 / 3.25mm 40” circular needles

### Notions

- **Stitch markers:** The pattern makes regular use of stitch markers, and they will be essential to keeping track of your double knit rows. You will want to have 16 stitch markers available to you, and tracking things will be simplest if you have multiple sets of 4 markers. For example, 4 purple markers, 4 green markers, etc... That’s not essential, any stitch markers (or even small loops of waste yarn) will do the job, but it will make things easier for you when working the yoke.
- **Cable holder -or- DPNs:** for holding stitches while working decreases. Double pointed needle (DPN) is recommended. You will need 2 of either the holder or the DPNs. If you use DPNs choose a size that is 1 or more sizes smaller than your smaller knitting needles. Ex: if your smaller needles are US3, the DPNs for decreases should be US1 or US2.
- **Optional Zipper.** This double knit cardigan is worked without buttonholes. It can be worn open, or with a sewn on zipper (added after the full sweater is complete). I recommend waiting until you are close to done with your sweater to make this choice.



## Gauge and Sizing

### Gauge

Please take the time to carefully check your gauge. The practice swatches that will be released ahead of the first clue are intended to both check gauge and practice some new stitches. Adjust your needle size as needed to meet gauge.

24 sts and 34 rounds = 4" in double knitting.  
Gauge should be taken on a blocked swatch!

### Sizing

1(2, 3, 4, 5) **6(7, 8, 9, 10)** 11(12, 13, 14, 15) = 30(33, 36, 38, 40)" **42(45, 48, 50, 53)"** 56(58, 61, 64, 67)" bust.

Note that these measurements are on the final blocked sweater and reflect the actual measurements of the sweater. You should account for your desired amount of ease when choosing a size. The On Board Sweater was designed to be worn with positive ease and if you are between sizes, I recommend sizing up rather than down.

All measurements are shown here in inches and are the final blocked length or circumference. **Note that the pattern includes instructions for adding length to the sleeves or body if desired.**

Size	Upper Arm	Bust	Body Length (hem to underarm)	Sleeve Length (cuff to underarm)
1	12	30	18	16
2	12.5	33	18	16
3	13	36	18	16
4	14	38	18	16
5	14.5	40	18	16
6	15	42	19	17
7	16	45	19	17
8	17	48	19	17
9	17.5	50	19	17
10	18	53	19	17
11	18.5	56	20	18
12	19	58	20	18
13	20	61	20	18
14	20.5	64	20	18
15	21	67	20	18

## Abbreviations

<b>BO</b>	Bind Off
<b>CO</b>	Cast On
<b>DST</b>	Double Stitch. This refers to both the knit and the purl of each double stitch in double knitting.
<b>K</b>	Knit
<b>K2tog</b>	Knit 2 together. Decreases 1.
<b>KFB</b>	Knit Front and Back. Knit through the front of the st, then without slipping it off the needle, knit through the back loop of the same stitch. Increases 1.
<b>M1</b>	Make 1. Lift the bar between the st just worked and the st about to be worked and knit through the back loop of that bar.
<b>M</b>	Marker
<b>P</b>	Purl
<b>R</b>	Row/Round
<b>Sl</b>	Slip
<b>SSK</b>	Slip Slip Knit. Slip 2 sts as if to knit, then knit them together through the back loop. Decreases 1.
<b>St/Sts</b>	Stitch/Stitches.



## Practice Swatches

### A quick double knitting refresher

Both yarns are carried across each row. When double knitting you will work 2 sts for each square on the chart: A knit followed by a purl. The colors reverse on the wrong side (when working flat. When working in the round you do not need to reverse the colors on the wrong side because you won't be working with the wrong side facing you). If you work CC for the background and MC for the foreground on the right side, work MC for the background and CC for the foreground on the wrong side when working flat.

**ALWAYS** bring both colors forward before purling, and both colors to the back before knitting.

**On the RS:** Read the chart from Right to Left. When working in the round you will read every row of the chart from Right to Left.

**On the WS:** Read the chart from left to right.

**ALWAYS** purl with the color you did not knit with (so if the chart indicates that you should K with MC you will purl with CC).

**Relax**, have fun, and remind yourself that while double knitting may look complex when complete, it is really just glorified K1P1 ribbing. You've got this.

### Helpful Links:

- [The 2021 Geek-A-Long FAQ](#)
- [Geek-A-Long Community on Ravelry](#)
- [How To Cast On for Double Knitting](#)
- [Double Knitting Basics](#)
- [How to Bind Off Double Knitting](#)
- [M1 Increase for Double Knitting](#)
- [KFB Increase for Double Knitting](#)
- [Cable Decrease for Double Knitting](#)
- [K2tog Decrease for Double Knitting](#)





## Practice Swatch 1: Electric Company

With MC (white on my sample) and CC (black on my sample), cast on 31 sts for double knitting. *A note to newer double knitters: This really means to cast on 62 total sts. Each double knitting stitch is made up of 2 parts – a knit followed by a purl. When casting on, you must cast on 2 sts for each stitch on the chart.*

Work the Electric Company chart for 44 rows. Odd rows are Right Side rows and should be read from right to left. Even rows are Wrong Side rows and should be read from left to right. At the end of row 44, cast off all stitches.

**Note: if you would like to work the log cabin edging shown in the sample photo, you should cut MC, bind off with CC, and do not cut CC when you reach the last stitch. Instead, leave it on your needle and proceed to the edging instructions.**

Edging: The edging for my swatch was worked in log cabin stitching. You can work any edging you want, but this one worked well for my intended use of this swatch: a pot holder/trivet.

1. With CC, pick up and knit 31 sts along the left edge of the square. Here, you will want to pick up and knit 2 sts for every 3 edge stitches (so, pick up and knit the first edge stitch, then the second edge stitch, then skip over the 3<sup>rd</sup>, and repeat down the edge). 32sts – note: the extra stitch here is the one that was on your needle when you started picking up sts.
2. Turn, and K to the last 2 sts. K2tog. 31sts.
3. K 2 more rows.
4. Using a K2tog bind off, BO all sts until only 1 stitch remains on your needles.
5. Pick up and knit 2 sts from the garter ridge edge. Then pick up and knit 31 sts along the bottom of the square. 34sts.
6. Turn, and K to the last 2 sts. K2tog. 33sts.
7. K 2 more rows.
8. Using a K2tog bind off, BO all sts until only 1 stitch remains on your needles.
- 18.
9. Pick up and knit 2 sts from the garter ridge edge. Then pick up and knit 31 sts along the right edge of the square. 34sts.
10. Turn, and K to the last 2 sts. K2tog. 33sts.
11. K 2 more rows.
12. Using a K2tog bind off, BO all sts until only 1 stitch remains on your needles.
13. Pick up and knit 2 sts from the garter ridge edge. Then pick up and knit 31 sts along the top of the square, then 2 sts along the garter ridge edge. 36sts.
14. Turn, and K to the last 2 sts. K2tog. 35sts.
15. K 2 more rows.
16. Using a K2tog bind off, BO all sts until only 1 stitch remains on your needles. Break yarn.
17. Repeat this process with an additional color if desired. When working this second color, you will pick up and work 35 sts along each edge rather than 31.



## Practice Swatch 2: Railroad

**Note:** There are 2 basic techniques for working double knitting increases and decreases. This swatch was designed to let you try out both techniques for increasing and both techniques for decreasing. Video tutorials are available for each one (see links above). The On Board sweater will call for the KFB increase and the Cable Decrease, however you may swap those for the M1 Increase or K2tog Decrease if you prefer. I recommend trying out all 4 and choosing the method of increasing and decreasing that feels most comfortable for you when working the sweater.

**Cast On:** With MC (white on my sample) and CC (black on my sample), cast on 23 sts for double knitting. *A note to newer double knitters: This really means to cast on 46 total sts. Each double knitting stitch is made up of 2 parts – a knit followed by a purl. When casting on, you must cast on 2 sts for each stitch on the chart.*

**Chart:** Work the Railroad chart for 48 rows. Odd rows are Right Side rows and should be read from right to left. Even rows are Wrong Side rows and should be read from left to right.

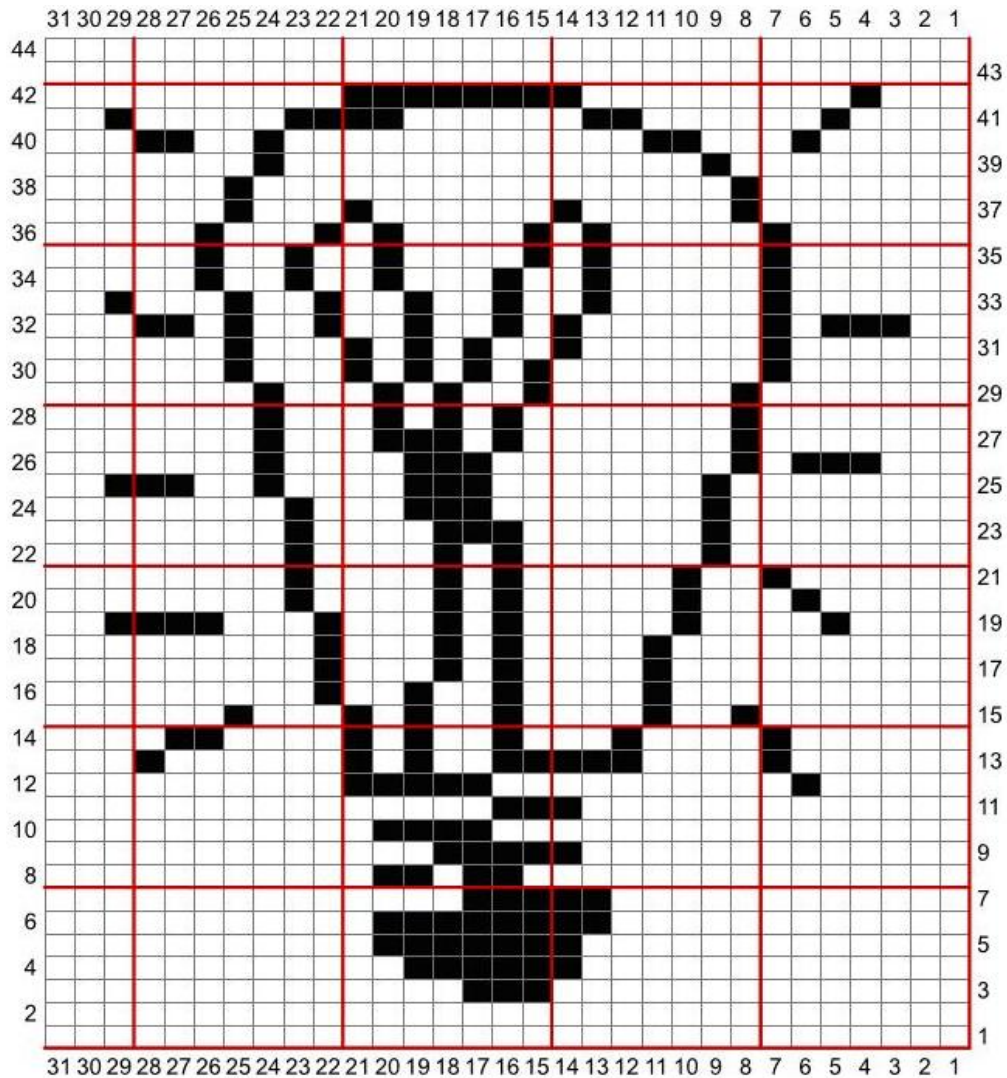
**Edging:** The edging will be worked by first picking up sts along each edge with MC, then joining to work in the round. You will pick up a total of 32 sts along the left and right edges. In step 2 below you will be instructed to pick up 16 sts, then place a marker and pick up 16 more. Make sure that as you pick up and knit sts along the edge that 16 sts brings you to the middle of the edge. You'll be picking up 2 sts for every 3 rows along those edges.

1. After completing row 48 of the Railroad Chart, break CC. With MC, work K2tog decreases across the row (knitting each knit together with it's adjacent purl). 23 sts. Place marker.
2. Pick up and knit 16 sts along the left edge. Place marker. Pick up and knit 16 sts along the remainder of the edge. Place marker.
3. Pick up and knit 23 sts along the cast on edge of the piece. Place marker.
4. Pick up and knit 16 sts along the right edge. Place marker. Pick up and knit 16 sts along
- the remainder of the right edge. Place marker and join to work in the round. Break MC, and join cc2 (red on my sample).
5. Purl all sts around, slipping markers when you come to them.
6. K1, M1 (make 1). \*K to 1 st before the next marker. M1, K1, slip marker, K1, M1. Repeat around from \* until you reach the last marker.
7. Purl all sts around, slipping markers when you come to them.

**Repeat 6-7 twice more. Bind off.**



# Practice Swatch 1: Electric Company



## Child's Play Charity

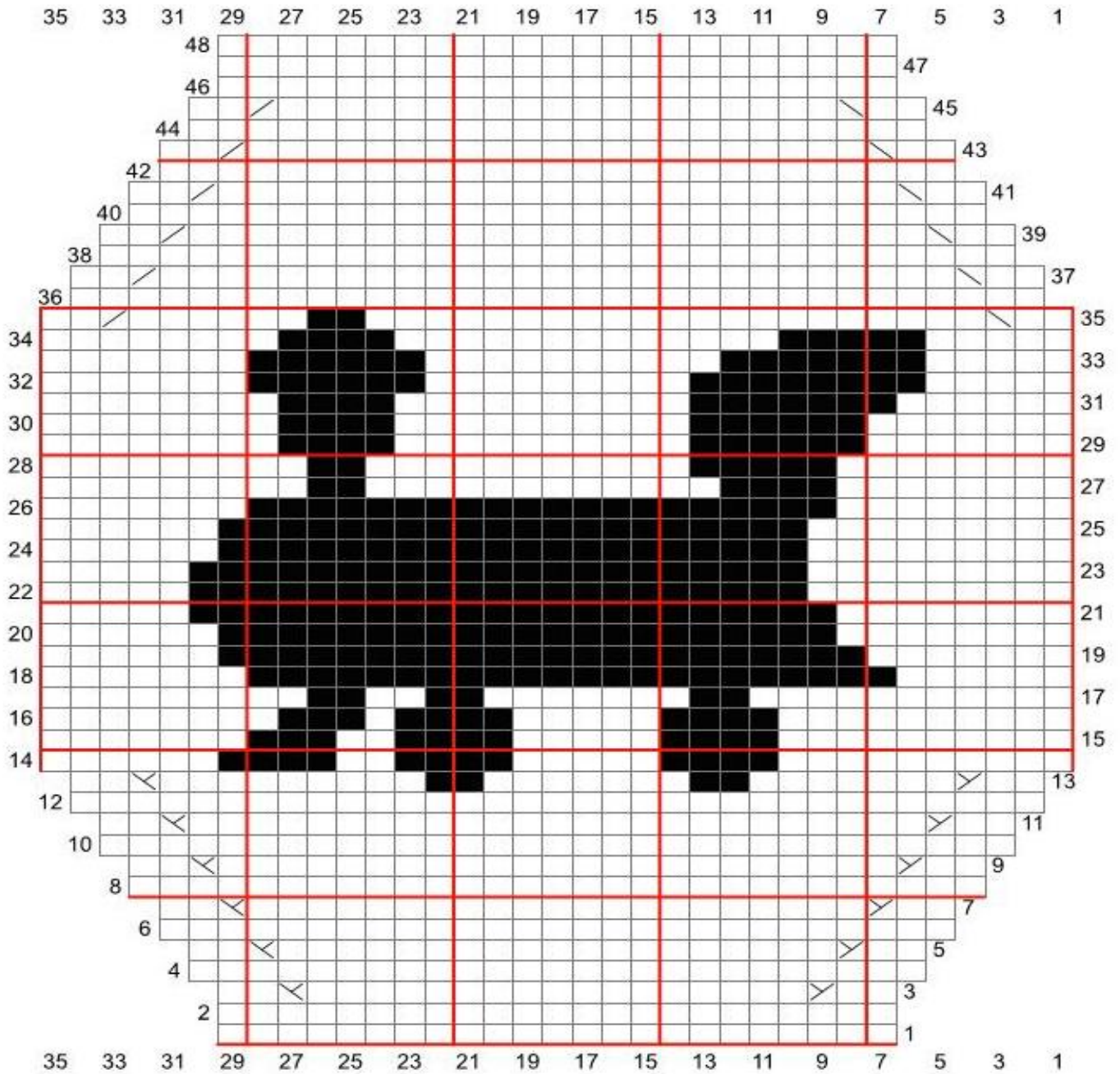
The Geek-A-Long (GAL) supports Child's Play Charity, which provides games and consoles to children in hospitals and domestic violence shelters. The sample blanket and/or sweater made by Lattes & Llamas is auctioned off at the annual Child's Play Charity gala in December each year. Additionally, GAL participants donate to CP Charity throughout the year via our [sanctioned widget](#). There is no required donation, but we encourage you to donate a few dollars in lieu of paying for this pattern. No donation is too small!

## © Lattes & Llamas

All rights reserved. You may not sell, redistribute, or publish this pattern. This pattern is for personal use only. However, if you wish to sell your Geek-A-Long Sweater or an item made using this pattern for the benefit of Child's Play Charity, please follow the guidelines set forth by CP Charity to ensure that 100% of the proceeds go to CP Charity. If you use one of the color charts featured on this sweater in one of your designs and wish to share it with others, it must be free and Lattes & Llamas must be given appropriate credit along with a link to our website and the [Child's Play Charity Widget](#).



# Practice Swatch 2: Railroad



	M1 Increase		Cable Decrease
	KFB Increase		K2tog Decrease