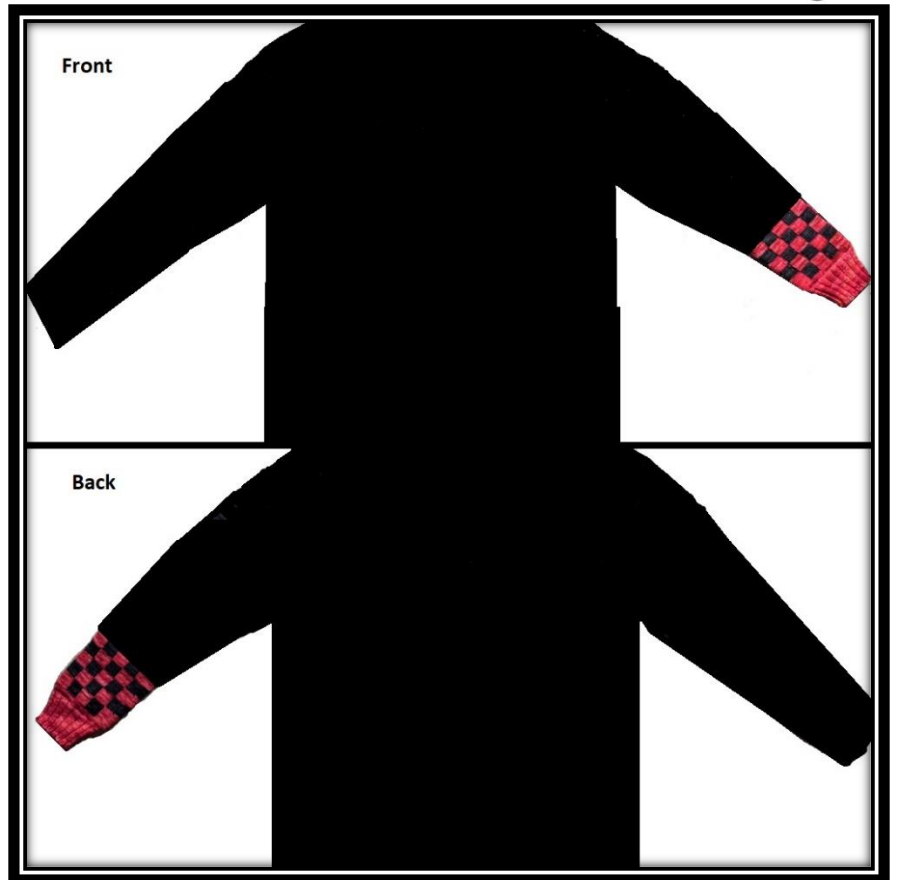




# Clue 1: Left Sleeve



## Child's Play Charity

The Geek-A-Long (GAL) supports Child's Play Charity, which provides games and consoles to children in hospitals and domestic violence shelters. The sample blanket and/or sweater made by Lattes & Llamas is auctioned off at the annual Child's Play Charity gala in December each year. Additionally, GAL participants donate to CP Charity throughout the year via our [sanctioned widget](#). There is no required donation, but we encourage you to donate a few dollars in lieu of paying for this pattern. No donation is too small!

## © Lattes & Llamas

All rights reserved. You may not sell, redistribute, or publish this pattern. This pattern is for personal use only. However, if you wish to sell your Geek-A-Long Sweater or an item made using this pattern for the benefit of Child's Play Charity, please follow the guidelines set forth by CP Charity to ensure that 100% of the proceeds go to CP Charity. If you use one of the color charts featured on this sweater in one of your designs and wish to share it with others, it must be free and Lattes & Llamas must be given appropriate credit along with a link to our website and the [Child's Play Charity Widget](#).





# On Board Sweater: Clue 1

The sleeves are worked from the cuff up and placed onto holders while you work the body. The sleeves are then joined to the body before beginning the yoke, and the underarms are closed by grafting live sleeve sts to live body sts when you complete the finishing work on the sweater. **Note: The cast on and cuff are worked in standard knitting (not double knitting)!**

## SLEEVE 1

**Cast On:** With CC2 and smaller needles, CO 52(52, 52, 60, 60) **60(64, 64, 64, 72)** 72(72, 76, 76, 76) sts using your favorite stretchy CO. Join to work in the round, taking care not to twist your sts. Place marker to indicate BoR.

**Cuff:** Work K2P2 ribbing for 20 rounds.

**R1:** K around, increasing 2(2, 2, 0, 0) **0(2, 2, 2, 0)** 0(0, 2, 2, 2) sts by M1. 54(54, 54, 60, 60) **60(66, 66, 66, 72)** 72(72, 78, 78, 78) sts.

**R2:** K around.

### Double Knitting Set Up:

1. KFB all sts around.
2. K1P1 around. **Change to larger needles at the end of this round.**
3. Join CC1 (do not break CC2). Work 1 round of double knitting, with CC2 as the main (facing/Knit) color and CC1 as the wrong side (purl) color. 54(54, 54, 60, 60) **60(66, 66, 66, 72)** 72(72, 78, 78, 78) Double knitting sts.

**Next:** Work Chart 1 as follows. **If you would like to INCREASE** the length of the sleeve you can do so here by repeating rounds of this chart additional times. **If you would like to DECREASE** the length of your sleeves you can work this chart for fewer rounds than called for in your size.

**Sizes 1-3:** Work only the sts between the yellow borders for 24 rounds.

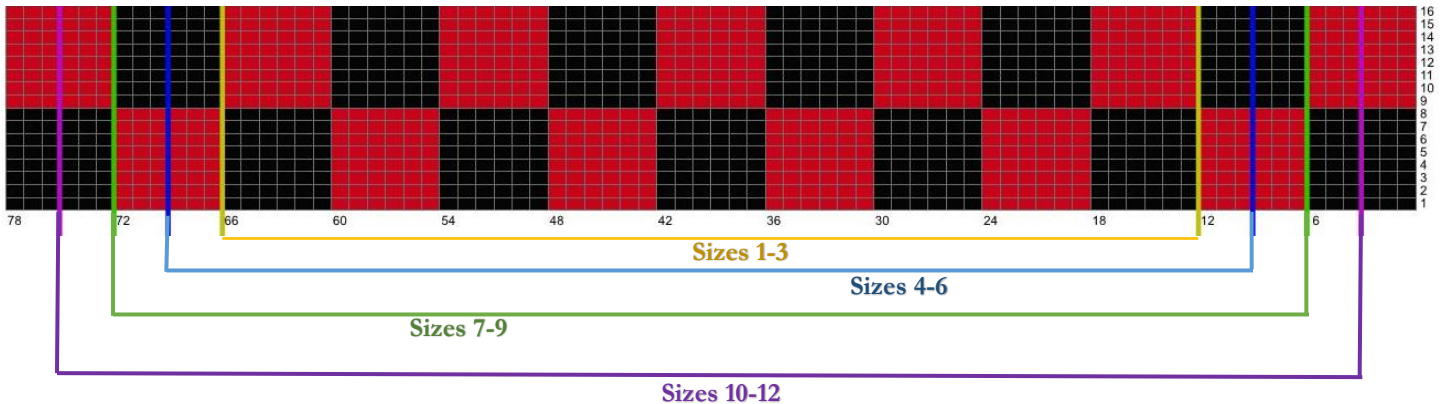
**Sizes 4-6:** Work only the sts between the blue borders for 32 rounds.

**Sizes 7-9:** Work only the sts between the green borders for 40 rounds.

**Sizes 10-12:** Work only the sts between the purple borders for 48 rounds.

**Sizes 13-15:** Work full chart for 48 rounds.

### Chart 1



Yarn requirements, abbreviation key, size, and gauge information are included in the Project Sheet, which is a separate download.