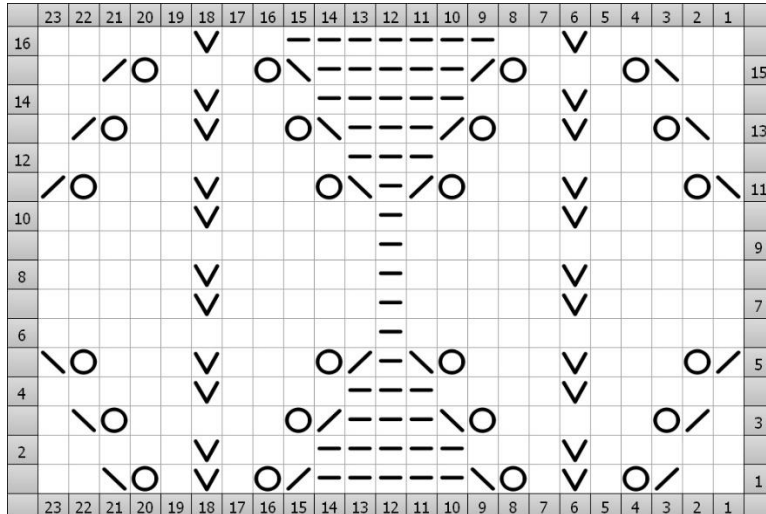


Gauge Swatch



Abbreviation Key







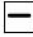


- BO** ----- Bind Off
- CC** ----- Contrast Color
- CO** ----- Cast On
- K** ----- Knit
- K2tog** ----- Knit 2 together. Decreases 1.
- M** ----- Marker
- MC** ----- Main Color
- P** ----- Purl
- R** ----- Round

SSK ----- Slip 2 stitches as if to knit. Insert the left needle through the back loop of these 2 slipped sts, and knit them together through the back loops. Decreases 1.

Sl1&dr ----- Slip 1 and drop: With your yarn held behind your work, slip 1 stitch without working it. The next stitch is a YO that was worked on the prior round. Drop this YO off of your needle without working it (the yarn from the YO will be absorbed into the slipped stitch making it extra-long).

Sl1 ----- With your yarn held behind your work, slip 1 stitch without working it.

Sl1YO ----- With your yarn held behind your work, slip 1 stitch without working it. Yarn over.

Key	
 Sl1&Dr (RS) Slip 1 and drop. Slip 1 stitch, and drop the YO next to it.	 sl1yo (RS) Slip the next stitch and YO. (WS) Slip the next stitch and YO.
 Knit k (RS) Knit (WS) Purl	 Slip Slip Knit ssk (RS) slip, slip, knit slipped sts together (WS) slip, slip, purl slipped sts together
 Knit 2 Together k2tog (RS) Knit 2 stitches together (WS) Purl 2 Together	 No Stitch x (RS) No Stitch (WS) No Stitch
 Purl p (RS) Purl (WS) Knit	 Yarn Over yo (RS) Yarn Over (WS) Yarn Over
 Slip s (RS) Slip (WS) Slip	